

2012-2013



NINGBO LAYER LIGHTING ELECTRICAL APPLIANCE CO.,LTD.

NINGBO LAYER LIGHTING ELECTRICAL APPLIANCE CO.,LTD.

Add: Yonghe industry zone, Shangyu, Zhejiang Prov., China

Tel: +86-575-82937568

Fax: +86-575-82937518

Email: layer@cnlayer.com

Web: www.cnlayer.com

来亚照明



LAYER LIGHTING. is a professional lighting manufacturer, it is located in the hometown of lighting in China. It is from Hang-Yong highway less than 20 kilometres and the transportation is very convenient.

Our company is specialized in manufacturing of various exterior lightings, including stainless steel, aluminium, copper and brass material. With the high quality equipment and craft, we have been keeping pursuing and improving our lights towards the higher quality and more colorful style according to our customers' requirement. We are also developing new products and expanding new market continuously.

At present, our products are extensively applied in city squares, public green belt, living areas, roads and buildings etc. . Now, Layer has won great fame and trust from lots of customers at home and abroad for its quality, colorful style and thoughtful service.

We sincerely look forward to serving every customer at home and abroad, we also would like to start and build a better cooperation hand in hand with the old and new customers all over the world.

Your satisfaction is our pursuit!



ONE WORLD ONE LIGHTING

LAYER

Factory

www.cnlayer.com



Contents



WALL SPOT LIGHT,WALL UP&DOWN LIGHT 01-40



WALL MOUNTED LIGHT, WALL RECESSED LIGHT 41-54



POND LIGHT, POOL LIGHT AND FOUNTAIN LIGHT 55-69



DECK LIGHT, IN-GROUND LIGHT 70-95



GARDEN LIGHT, LED FLOOD LIGHT 96-123



CEILING DOWNLIGHT 124-129



ACCESSORIES 130-133

BEIJING



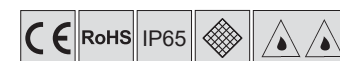
WALL SPOT LIGHT,WALL UP&DOWN LIGHT





SPECIFICATION

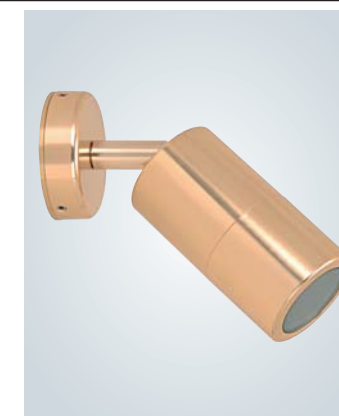
- 1) Anodised aluminum body
- 2) Flush tempered glass diffuser
- 3) IP65 protection class
- 4) Sealed with silicone rubber gasket and backing plate included
- 5) Special remark:
 - The thickness of fitting body is 3MM
 - Anodised aluminum body can be clear anodised, gold anodised, brown anodised, titanium anodised, black anodised etc.
 - This light fitting can be used 82mm long LED lamp
- 6) Suitable places: Outdoor corridor, outdoor wall, garden etc.



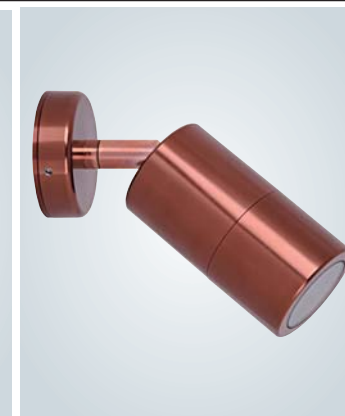
LY1101A



clear anodised



gold anodised



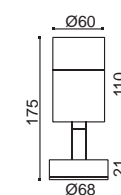
brown anodised



titanium anodised



black anodised



Halogen



5x1W



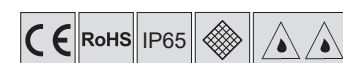
5x2W

Model	Voltage	Lampholder	Lamp	Watt
LY1101A	240V/120V	GU10	GU10 halogen lamp	Max.35W
			GU10 energy-saving lamp	Max.13W
			GU10 high power LED lamp	Max.10W
	12V	GX5.3	MR16 halogen lamp	Max.20W
			MR16 high power LED lamp	Max.10W

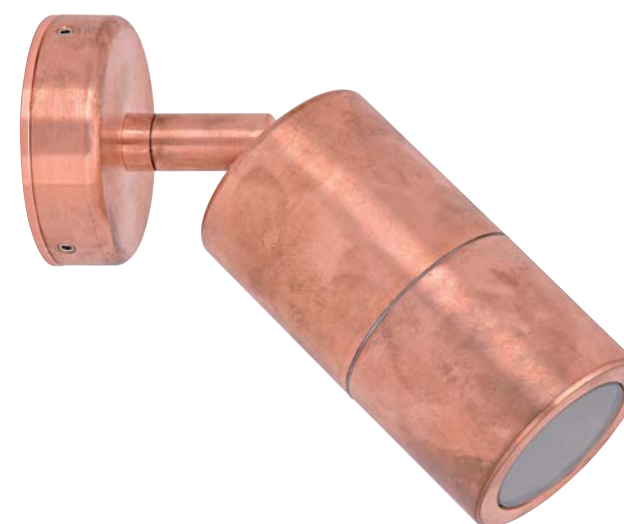


SPECIFICATION

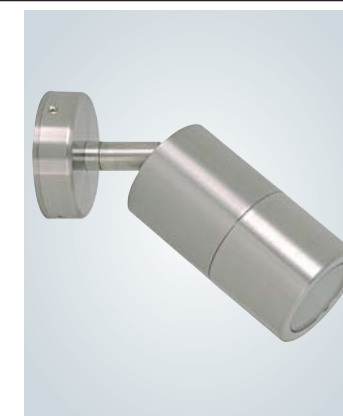
- 1) Stainless steel, solid copper, brass or die-casting aluminum body
- 2) Flush tempered glass diffuser
- 3) IP65 protection class
- 4) Sealed with silicone rubber gasket and backing plate included
- 5) Special remark:
 - The thickness of fitting body is 3MM
 - The stainless steel grade includes 316 marine grade and 304 grade
 - The stainless steel body is electrophoresis finishing
 - Die-casting aluminum body can be powder coated black, silver, white etc.
 - This light fitting can be used 82mm long LED lamp
- 6) Suitable places: Outdoor corridor, outdoor wall, garden etc.



LY1101A



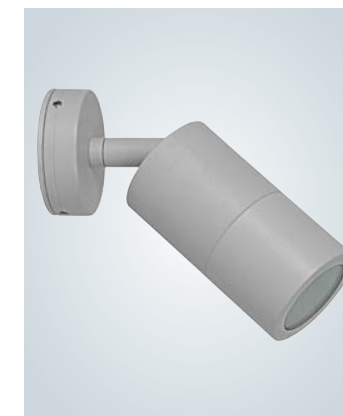
solid copper



316 marine grade S/S



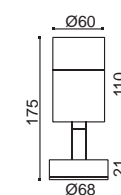
Alu.powder coated black



Alu.powder coated silver



Alu.powder coated white



Halogen



5x1W



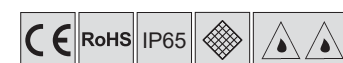
5x2W

Model	Voltage	Lampholder	Lamp	Watt
LY1101A	240V/120V	GU10	GU10 halogen lamp	Max.35W
			GU10 energy-saving lamp	Max.13W
			GU10 high power LED lamp	Max.10W
	12V	GX5.3	MR16 halogen lamp	Max.20W
			MR16 high power LED lamp	Max.10W



SPECIFICATION

- 1) Anodised aluminum body
- 2) Flush tempered glass diffuser
- 3) IP65 protection class
- 4) Sealed with silicone rubber gasket and backing plate included
- 5) Special remark:
 - The thickness of fitting body is 3MM
 - Anodised aluminum body can be clear anodised, gold anodised, brown anodised, titanium anodised, black anodised etc.
 - This light fitting can be used 82mm long LED lamp
- 6) Suitable places: Outdoor corridor, outdoor wall, garden etc.



titanium anodised

LY1102A

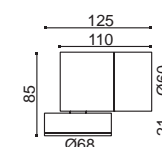


clear anodised

gold anodised

brown anodised

black anodised



Halogen



5x1W



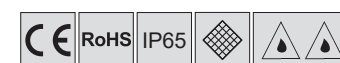
5x2W

Model	Voltage	Lampholder	Lamp	Watt
LY1102A	240V/120V	GU10	GU10 halogen lamp	Max.35W
			GU10 energy-saving lamp	Max.13W
			GU10 high power LED lamp	Max.10W
	12V	GX5.3	MR16 halogen lamp	Max.20W
			MR16 high power LED lamp	Max.10W



SPECIFICATION

- 1) Stainless steel, solid copper, brass or die-casting aluminum body
- 2) Flush tempered glass diffuser
- 3) IP65 protection class
- 4) Sealed with silicone rubber gasket and backing plate included
- 5) Special remark:
 - The thickness of fitting body is 3MM
 - The stainless steel grade includes 316 marine grade and 304 grade
 - The stainless steel body is electrophoresis finishing
 - Die-casting aluminum body can be powder coated black, silver, white etc.
 - This light fitting can be used 82mm long LED lamp
- 6) Suitable places: Outdoor corridor, outdoor wall, garden etc.



LY1102A



316 marine grade S/S



Alu. powder coated black



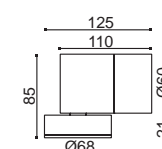
Alu. powder coated silver



Alu. powder coated white



solid copper



Halogen

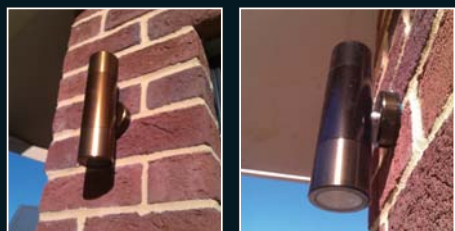


5x1W



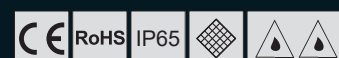
5x2W

Model	Voltage	Lampholder	Lamp	Watt
LY1102A	240V/120V	GU10	GU10 halogen lamp	Max.35W
			GU10 energy-saving lamp	Max.13W
			GU10 high power LED lamp	Max.10W
	12V	GX5.3	MR16 halogen lamp	Max.20W
			MR16 high power LED lamp	Max.10W



SPECIFICATION

- 1) Anodised aluminum body
- 2) Flush tempered glass diffuser
- 3) IP65 protection class
- 4) Sealed with silicone rubber gasket and backing plate included
- 5) Special remark:
 - The thickness of fitting body is 3MM
 - Anodised aluminum body can be clear anodised, gold anodised, brown anodised, titanium anodised, black anodised etc.
 - This light fitting can be used 82mm long LED lamp
- 6) Suitable places: Outdoor corridor, outdoor wall, garden etc.



LY1103A



brown anodised



clear anodised



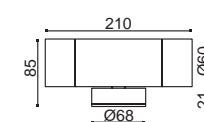
gold anodised



titanium anodised



black anodised



Halogen



5x1W



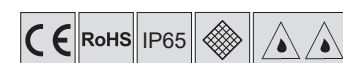
5x2W

Model	Voltage	Lampholder	Lamp	Watt
LY1103A	240V/120V	GU10	GU10 halogen lamp	Max.2x35W
			GU10 energy-saving lamp	Max.2x13W
			GU10 high power LED lamp	Max.2x10W
	12V	GX5.3	MR16 halogen lamp	Max.2x20W
			MR16 high power LED lamp	Max.2x10W



SPECIFICATION

- 1) Stainless steel, solid copper, brass or die-casting aluminum body
- 2) Flush tempered glass diffuser
- 3) IP65 protection class
- 4) Sealed with silicone rubber gasket and backing plate included
- 5) Special remark:
 - The thickness of fitting body is 3MM
 - The stainless steel grade includes 316 marine grade and 304 grade
 - The stainless steel body is electrophoresis finishing
 - Die-casting aluminum body can be powder coated black, silver, white etc.
 - This light fitting can be used 82mm long LED lamp
- 6) Suitable places: Outdoor corridor, outdoor wall, garden etc.



LY1103A



316 marine grade S/S



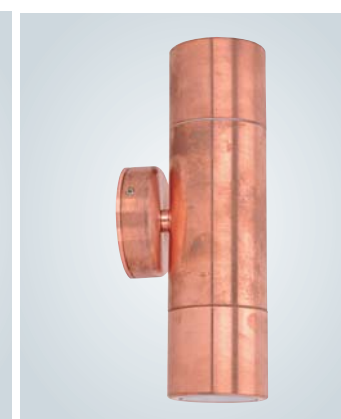
Alu. powder coated black



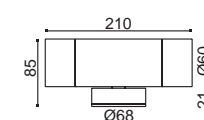
Alu. powder coated silver



Alu. powder coated white



solid copper



Halogen



5x1W



5x2W

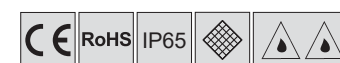
Model	Voltage	Lampholder	Lamp	Watt
LY1103A	240V/120V	GU10	GU10 halogen lamp	Max. 2x35W
			GU10 energy-saving lamp	Max. 2x13W
			GU10 high power LED lamp	Max. 2x10W
	12V	GX5.3	MR16 halogen lamp	Max. 2x20W
			MR16 high power LED lamp	Max. 2x10W



LY1403A

SPECIFICATION

- 1) Stainless steel, anodised aluminum, solid copper, brass or die-casting aluminum body
- 2) Flush tempered glass diffuser
- 3) IP65 protection class
- 4) Sealed with silicone rubber gasket and backing plate included
- 5) Special remark:
 - The thickness of fitting body is 3MM
 - The stainless steel grade includes 316 marine grade and 304 grade
 - The stainless steel body is electrophoresis finishing
 - Anodised aluminum body can be clear anodised, gold anodised, brown anodised, titanium anodised, black anodised etc.
 - Die-casting aluminum body can be powder coated black, silver, white etc.
 - This light fitting can be used 82mm long LED lamp
- 6) Suitable places: Outdoor corridor, outdoor wall, garden etc.



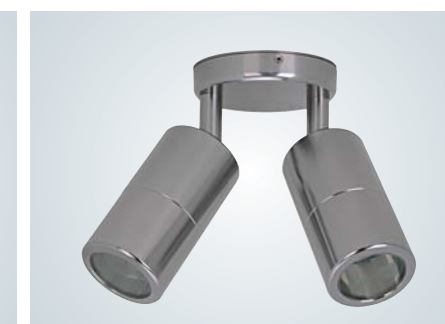
gold anodised



316 marine grade S/S



solid copper



titanium anodised



clear anodised



brown anodised



black anodised



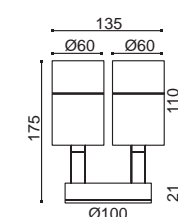
Alu. powder coated black



Alu. powder coated silver



Alu. powder coated white



Halogen



5x1W



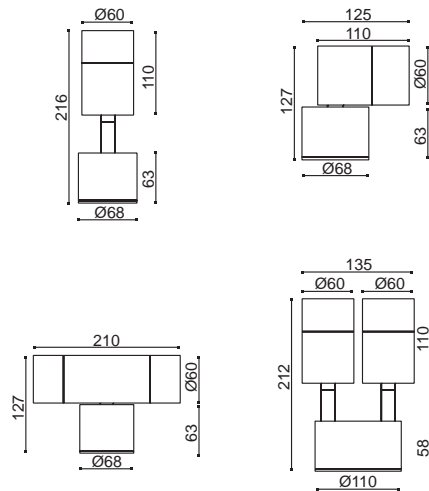
5x2W

Model	Voltage	Lampholder	Lamp	Watt
LY1403A	240V/120V	GU10	GU10 halogen lamp	Max. 2x35W
			GU10 energy-saving lamp	Max. 2x13W
			GU10 high power LED lamp	Max. 2x10W
	12V	GX5.3	MR16 halogen lamp	Max. 2x20W
			MR16 high power LED lamp	Max. 2x10W



SPECIFICATION

- 1) Stainless steel, anodised aluminum, solid copper, brass or die-casting aluminum body
- 2) Flush tempered glass diffuser
- 3) IP65 protection class
- 4) Sealed with silicone rubber gasket and backing plate included, built in replaceable transformer
- 5) Special remark:
 - The thickness of fitting body is 3MM
 - The stainless steel grade includes 316 marine grade and 304 grade
 - The stainless steel body is electrophoresis finishing
 - Anodised aluminum body can be clear anodised, gold anodised, brown anodised, titanium anodised, black anodised etc.
 - Die-casting aluminum body can be powder coated black, silver, white etc.
 - This light fitting can be used 82mm long LED lamp
- 6) Suitable places: Outdoor corridor, outdoor wall, garden etc.

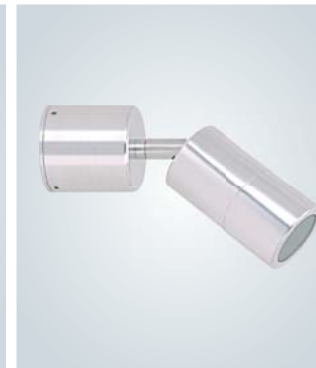


Model	Voltage	Lampholder	Lamp	Watt
LY1101B	12V	GX5.3	MR16 halogen lamp	Max.20W
LY1102B			MR16 high power LED lamp	Max.10W
LY1103B	12V	GX5.3	MR16 halogen lamp	Max.2x20W
LY1403B			MR16 high power LED lamp	Max.2x10W

LY1101B



316 marine grade S/S



clear anodised



Alu.powder coated black



solid copper

LY1102B



316 marine grade S/S



clear anodised



Alu.powder coated black



solid copper

LY1103B



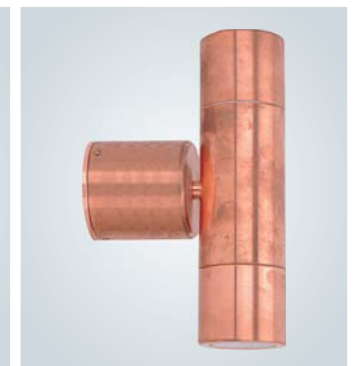
316 marine grade S/S



clear anodised



Alu.powder coated black



solid copper

LY1403B



316 marine grade S/S



clear anodised



Alu.powder coated black



solid copper





LY1201A



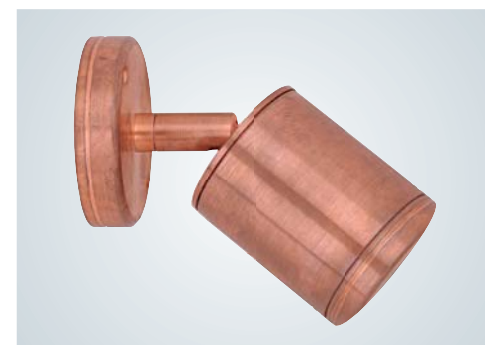
316 marine grade S/S



clear anodised



Alu.powder coated black



solid copper

SPECIFICATION

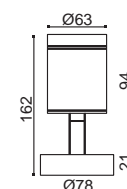
- 1) Stainless steel, anodised aluminum, solid copper, brass or die-casting aluminum body
- 2) Tempered glass diffuser
- 3) IP65 protection class
- 4) Sealed with silicone rubber gasket and backing plate included
- 5) Special remark:
 - The thickness of stainless steel, solid copper and brass fitting body is 5MM
 - The thickness of anodised and die-casting aluminum fitting body is 8MM
 - The stainless steel grade includes 316 marine grade and 304 grade
 - The stainless steel body is electrophoresis finishing
 - Anodised aluminum body can be clear anodised, gold anodised, brown anodised, titanium anodised, black anodised etc.
 - Die-casting aluminum body can be powder coated black, silver, white etc.
 - This light fitting can be used 65mm long LED lamp
- 6) Suitable places: Outdoor corridor, outdoor wall, garden etc.



Model	Voltage	Lampholder	Lamp	Watt
LY1201A	240V/120V	GU10	GU10 halogen lamp	Max.35W
			GU10 high power LED lamp	Max.5W
	12V	GX5.3	MR16 halogen lamp	Max.20W
			MR16 high power LED lamp	Max.5W



Halogen 5x1W



SPECIFICATION

- 1) Stainless steel, anodised aluminum, solid copper, brass or die-casting aluminum body
- 2) Tempered glass diffuser
- 3) IP65 protection class
- 4) Sealed with silicone rubber gasket and backing plate included
- 5) Special remark:
 - The thickness of stainless steel, solid copper and brass fitting body is 5MM
 - The thickness of anodised and die-casting aluminum fitting body is 8MM
 - The stainless steel grade includes 316 marine grade and 304 grade
 - The stainless steel body is electrophoresis finishing
 - Anodised aluminum body can be clear anodised, gold anodised, brown anodised, titanium anodised, black anodised etc.
 - Die-casting aluminum body can be powder coated black, silver, white etc.
 - This light fitting can be used 65mm long LED lamp
- 6) Suitable places: Outdoor corridor, outdoor wall, garden etc.



316 marine grade S/S



clear anodised



Alu.powder coated black

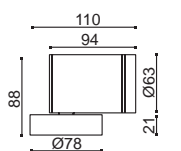


solid copper

Model	Voltage	Lampholder	Lamp	Watt
LY1203A	240V/120V	GU10	GU10 halogen lamp	Max.35W
			GU10 high power LED lamp	Max.5W
	12V	GX5.3	MR16 halogen lamp	Max.20W
			MR16 high power LED lamp	Max.5W



Halogen 5x1W





SPECIFICATION

- 1) Stainless steel, anodised aluminum, solid copper, brass or die-casting aluminum body
- 2) Tempered glass diffuser
- 3) IP65 protection class
- 4) Sealed with silicone rubber gasket and backing plate included
- 5) Special remark:
 - The thickness of stainless steel, solid copper and brass fitting body is 5MM
 - The thickness of anodised and die-casting aluminum fitting body is 8MM
 - The stainless steel grade includes 316 marine grade and 304 grade
 - The stainless steel body is electrophoresis finishing
 - Anodised aluminum body can be clear anodised, gold anodised, brown anodised, titanium anodised, black anodised etc.
 - Die-casting aluminum body can be powder coated black, silver, white etc.
 - This light fitting can be used 65mm long LED lamp
- 6) Suitable places: Outdoor corridor, outdoor wall, garden etc.



LY1204A

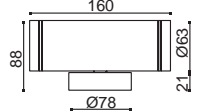


316 marine grade S/S

clear anodised

Alu. powder coated black

solid copper



LY1402A



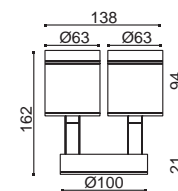
316 marine grade S/S

clear anodised



Alu. powder coated black

solid copper



Halogen

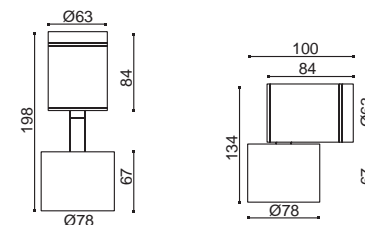
5x1W

Model	Voltage	Lampholder	Lamp	Watt
LY1204A	240V/120V	GU10	GU10 halogen lamp	Max.2x35W
LY1402A	12V	GX5.3	GU10 high power LED lamp	Max.2x5W
			MR16 halogen lamp	Max.2x20W
			MR16 high power LED lamp	Max.2x5W



SPECIFICATION

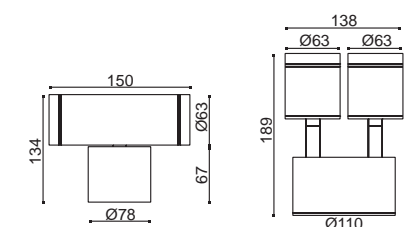
- 1) Stainless steel, anodised aluminum, solid copper, brass or die-casting aluminum body
- 2) Tempered glass diffuser
- 3) IP65 protection class
- 4) Sealed with silicone rubber gasket and backing plate included, built in replaceable transformer
- 5) Special remark:
 - The thickness of stainless steel, solid copper and brass fitting body is 5MM
 - The thickness of anodised and die-casting aluminum fitting body is 8MM
 - The stainless steel grade includes 316 marine grade and 304 grade
 - The stainless steel body is electrophoresis finishing
 - Anodised aluminum body can be clear anodised, gold anodised, brown anodised, titanium anodised, black anodised etc.
 - Die-casting aluminum body can be powder coated black, silver, white etc.
 - This light fitting can be used 65mm long LED lamp
- 6) Suitable places: Outdoor corridor, outdoor wall, garden etc.



LY1201B



LY1203B



LY1204B



LY1402B



Halogen

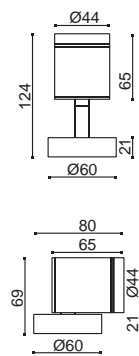
5x1W

Model	Voltage	Lampholder	Lamp	Watt
LY1201B	12V	GX5.3	MR16 halogen lamp	Max.20W
LY1203B			MR16 high power LED lamp	Max.5W
LY1204B	12V	GX5.3	MR16 halogen lamp	Max.2x20W
LY1402B			MR16 high power LED lamp	Max.2x5W

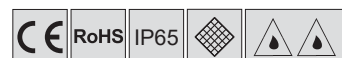


SPECIFICATION

- 1) Stainless steel, anodised aluminum, solid copper, brass or die-casting aluminum body
- 2) Tempered glass / LED lens diffuser
- 3) IP65 protection class
- 4) Sealed with silicone rubber gasket and backing plate included
- 5) Special remark:
 - The thickness of fitting body is 5.7MM
 - The stainless steel grade includes 316 marine grade and 304 grade
 - The stainless steel body is electrophoresis finishing
 - Anodised aluminum body can be clear anodised, gold anodised, brown anodised, titanium anodised, black anodised etc.
 - Die-casting aluminum body can be powder coated black, silver, white etc.
 - This light fitting can be used LED lamp
- 6) Suitable places: Outdoor corridor, outdoor wall, garden etc.



Model	Voltage	Lampholder	Lamp	Watt
LY1001A	240V/120V/12V	LED	High power LEDs	1W / 3W
LY1002A	12V	G4	MR11 halogen lamp	Max.20W
			MR11 high power LED lamp	1W



LY1001A



316 marine grade S/S



clear anodised



gold anodised



brown anodised



titanium anodised



black anodised

LY1002A



316 marine grade S/S



clear anodised



gold anodised



brown anodised



titanium anodised



black anodised



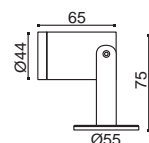
LY1005A

SPECIFICATION

- 1) Stainless steel, anodised aluminum, solid copper, brass or die-casting aluminum body
- 2) Tempered glass / LED lens diffuser
- 3) IP65 protection class
- 4) Sealed with silicone rubber gasket and installing plate included
- 5) Special remark:
 - The thickness of fitting body is 5.7MM
 - The stainless steel grade includes 316 marine grade and 304 grade
 - The stainless steel body is electrophoresis finishing
 - Anodised aluminum body can be clear anodised, gold anodised, brown anodised, titanium anodised, black anodised etc.
 - Die-casting aluminum body can be powder coated black, silver, white etc.
 - This light fitting can be used LED lamp
- 6) Suitable places: Outdoor corridor, outdoor wall, garden etc.



Model	Voltage	Lampholder	Lamp	Watt
LY1005A	240V/120V	LED	High power LEDS	1W / 3W
			MR11 halogen lamp	Max.20W
			MR11 high power LED lamp	1W
LY1003A	240V/120V	LED	High power LEDS	2x1W / 2x3W
			MR11 halogen lamp	Max.2x20W
			MR11 high power LED lamp	2x1W



clear anodised



gold anodised



brown anodised



titanium anodised



black anodised



LY1003A



316 marine grade S/S



clear anodised



gold anodised



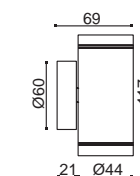
brown anodised



titanium anodised



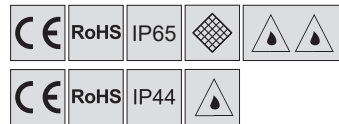
black anodised





SPECIFICATION

- 1) Stainless steel body
- 2) Tempered glass diffuser
- 3) IP65 / IP44 protection class
- 4) Sealed with silicone rubber gasket and includes backing plate
- 5) Special remark:
 - The thickness of the light body is 1mm or 2mm
 - Stainless steel grade includes 316 marine grade and 304 grade
 - Stainless steel body is electrophoresis finishing
 - This light fitting can be used LED lamp
- 6) Suitable places: Outdoor corridor, outdoor wall, garden etc.



LY1605A



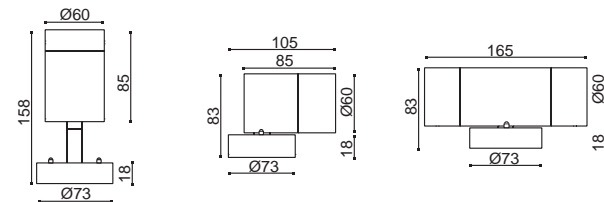
LY1604A



LY1603A



Halogen 5x1W



Model	Voltage	Lampholder	Lamp	Watt
LY1603	240V/120V	GU10	GU10 halogen lamp	Max.35W
LY1604			GU10 high power LED lamp	Max.5W
LY1605	12V	GX5.3	MR16 halogen lamp	Max.20W
			MR16 high power LED lamp	Max.5W



LY1613



LY1614



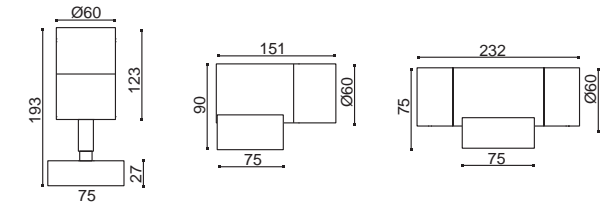
LY1615

SPECIFICATION

- 1) Stainless steel body
- 2) Tempered glass diffuser
- 3) IP54 protection class
- 4) Sealed with silicone rubber gasket and includes backing plate
- 5) Special remark:
 - The thickness of the light body is 1mm
 - Stainless steel body is electrophoresis finishing
 - This light fitting can be used 82mm long LED lamp
- 6) Suitable places: Outdoor corridor, outdoor wall, garden etc.



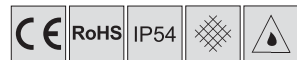
Halogen 5x1W 5x2W



Model	Voltage	Lampholder	Lamp	Watt
LY1613	240V/120V	GU10	GU10 halogen lamp	Max.35W
LY1614			GU10 energy-saving lamp	Max.13W
LY1615	12V	GX5.3	GU10 high power LED lamp	Max.10W
			MR16 halogen lamp	Max.20W
			MR16 high power LED lamp	Max.10W

SPECIFICATION

- 1) Stainless steel body
- 2) Tempered glass diffuser
- 3) IP54 protection class
- 4) Sealed with silicone rubber gasket and includes backing plate
- 5) Special remark:
 - The thickness of the light body is 1mm
 - Stainless steel body is electrophoresis finishing
 - This light fitting can be used LED lamp
- 6) Suitable places: Outdoor corridor, outdoor wall, garden etc.



LY1601



LY1624



LY1644



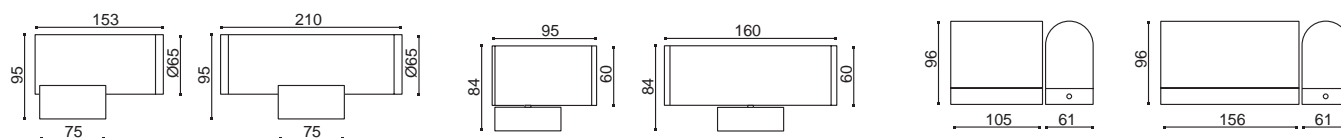
LY1602



LY1625



LY1645



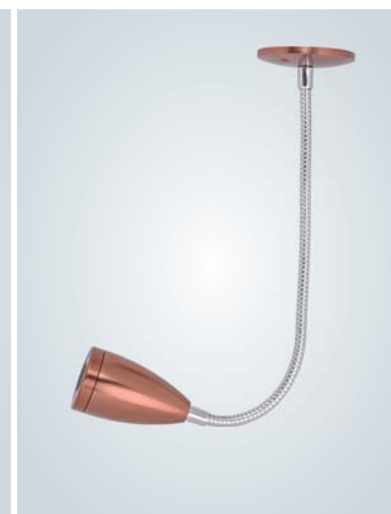
Model	Voltage	Lampholder	Lamp	Watt
LY1601	240V/120V	GU10	GU10 halogen lamp	Max.35W
LY1602			GU10 energy-saving lamp	Max.13W
			GU10 high power LED lamp	Max.10W
LY1624/5	240V/120V	GU10	GU10 halogen lamp	Max.35W
LY1644/5			GU10 high power LED lamp	Max.5W

SPECIFICATION

- 1) Anodised aluminum body
- 2) LED lens diffuser
- 3) Anodised aluminum body can be clear anodised, gold anodised, brown anodised, titanium anodised, black anodised etc.
- 4) Sealed with silicone rubber gasket
- 5) Suitable places: indoor corridor, indoor wall etc.



LY1701-AN



LY1701-AN-BW



LY1701-AN-BL

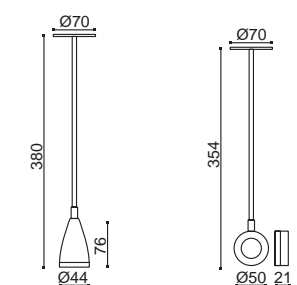


LY1702-AN-BR

Model	Voltage	Lampholder	Lamp	Watt
LY1701 / LY1702	240V/120V	LED	High power LEDs	1W / 3W



LY1702-AN





LY1902



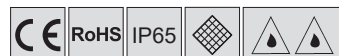
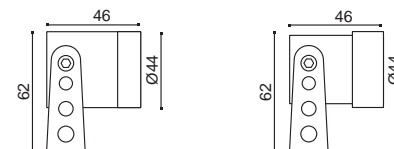
LY1901



LY1901-AN-BW

SPECIFICATION

- 1) Stainless steel or anodised aluminum body
- 2) LED lens diffuser
- 3) IP65 protection class
- 4) Special remark:
 - Stainless steel grade includes 316 marine grade and 304 grade
 - Stainless steel body is electrophoresis finishing
 - Anodised aluminum body can be clear anodised, gold anodised, brown anodised, titanium anodised, black anodised etc.
 - Sealed with silicone rubber gasket
 - A plastic spike is available
- 5) Suitable places: Interior decoration, Garden etc.



Model	Voltage	Lampholder	Lamp	Watt
LY1901 / LY1902	240V/120V/12V	LED	High power LEDs	1W / 3W

SPECIFICATION

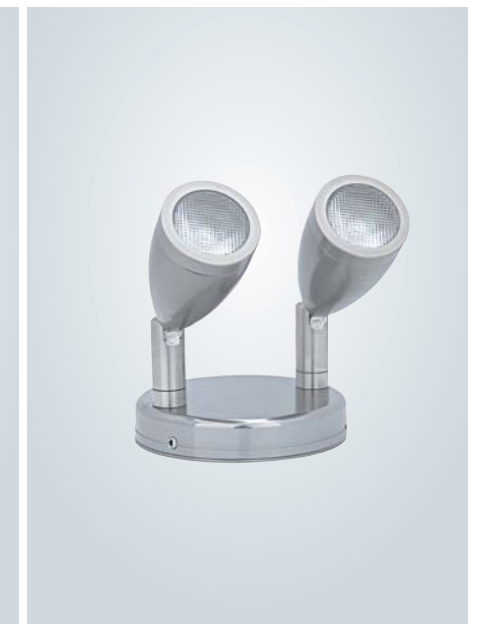
- 1) Anodised aluminum body
- 2) LED lens diffuser
- 3) Anodised aluminum body can be clear anodised, gold anodised, brown anodised, titanium anodised, black anodised etc.
- 4) Sealed with silicone rubber gasket
- 5) Suitable places: indoor corridor, indoor wall etc.



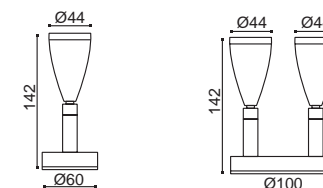
LY1806A-AN-BL



LY1806A-AN-BW



LY1806B-AN-SI

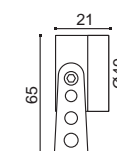
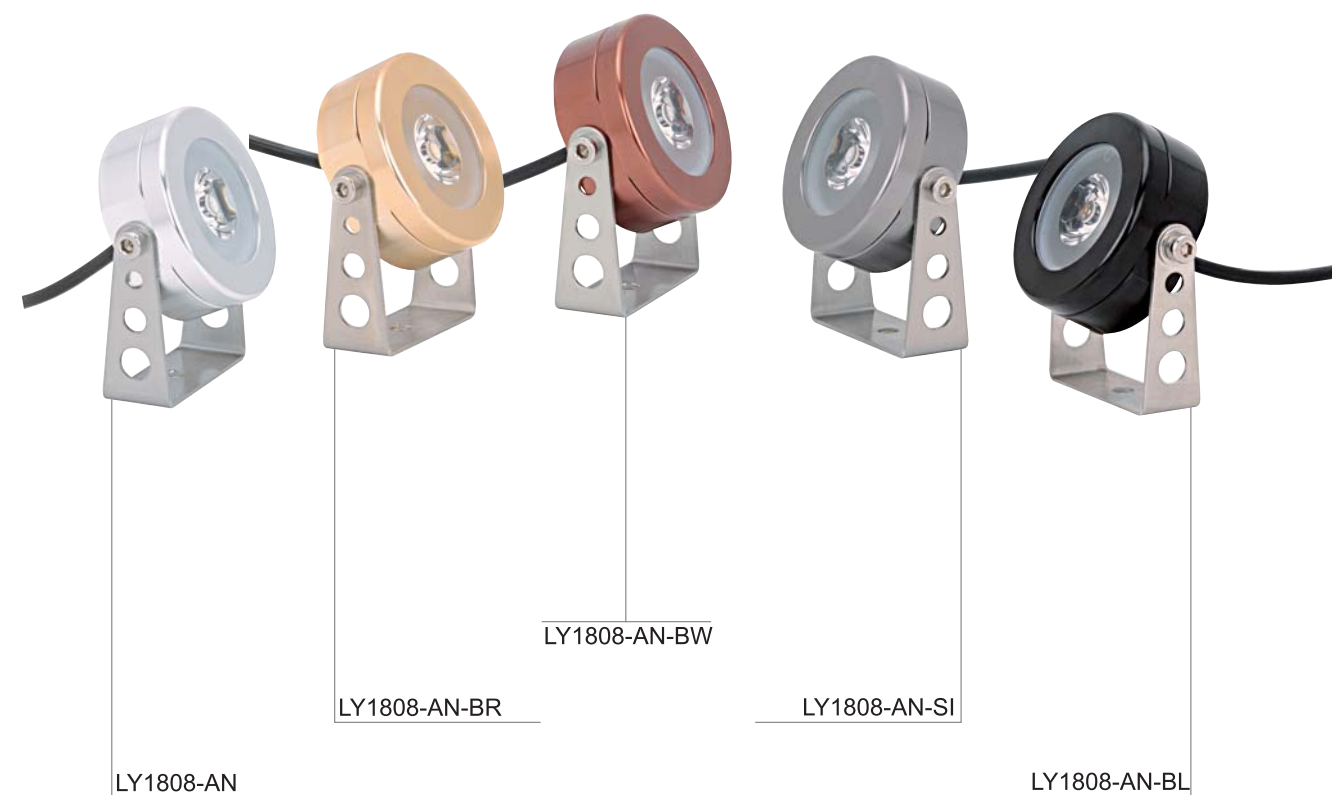


Model	Voltage	Lampholder	Lamp	Watt
LY1806	240V/120V/12V	LED	High power LEDs	1W / 3W



SPECIFICATION

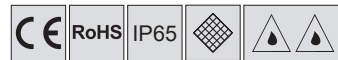
- 1) Anodised aluminum body
- 2) LED lens diffuser
- 3) Anodised aluminum body can be clear anodised, gold anodised, brown anodised, titanium anodised, black anodised etc.
- 4) Sealed with silicone rubber gasket
- 5) Suitable places: indoor corridor, indoor wall etc.



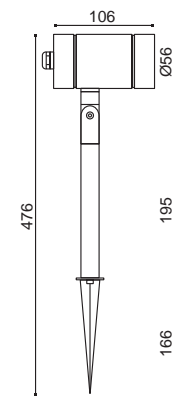
Model	Voltage	Lampholder	Lamp	Watt
LY1808	240V/120V/12V	LED	High power LEDS	1W / 3W

SPECIFICATION

- 1) Stainless steel or solid copper body
- 2) Flush tempered glass diffuser
- 3) IP65 protection class
- 4) Special remark:
 - The thickness of fitting body is 4mm
 - Stainless steel grade includes 316 marine grade and 304 grade
 - Stainless steel body is electrophoresis finishing
 - Sealed with silicone rubber gasket
- 5) Suitable places: Lawn, Garden, Park, Path etc.

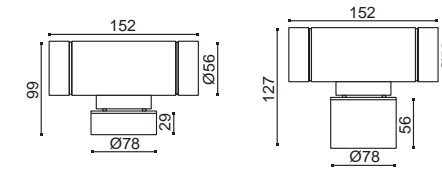


LY5009



Model	Voltage	Lampholder	Lamp	Watt
LY5009				
LY1213	12V	GX5.3	MR16 halogen lamp	Max.20W
LY1211			MR16 high power LED lamp	Max.5W
LY1214	12V	GX5.3	MR16 halogen lamp	Max.2x20W
LY1412			MR16 high power LED lamp	Max.2x5W

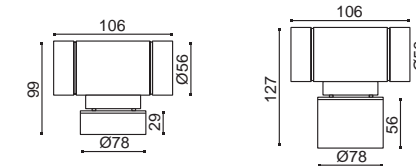
WALL SPOT LIGHT, WALL UP&DOWN LIGHT



LY1214A



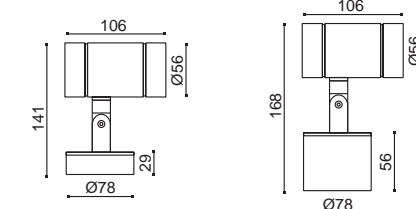
LY1214B



LY1213A



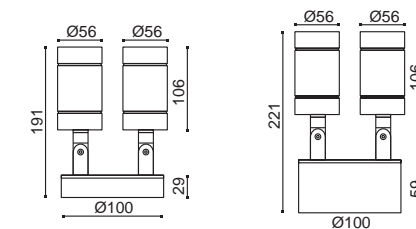
LY1213B



LY1211A



LY1211B



LY1412A

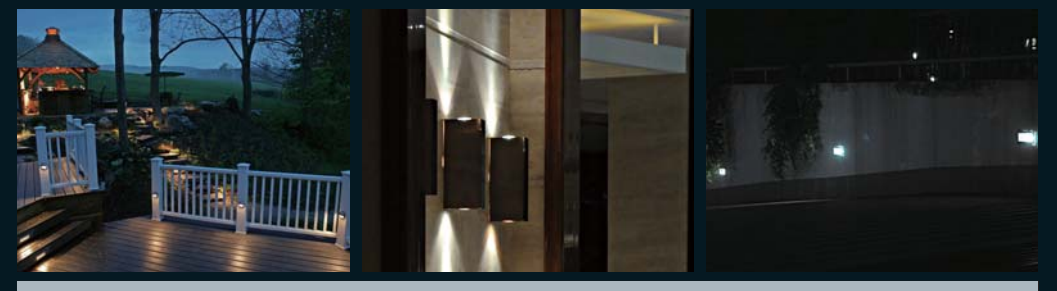


LY1412B

SYDNEY



WALL MOUNTED LIGHT, WALL RECESSED LIGHT





SPECIFICATION

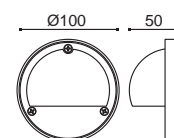
- 1) Stainless steel, brass or die-casting aluminum body
- 2) Tempered glass diffuser
- 3) IP65 protection class
- 4) Sealed with silicone rubber gasket
- 5) Special remark:
 - Stainless steel grade includes 316 marine grade and 304 grade
 - Stainless steel body is electrophoresis finishing
 - Die-casting aluminum body is powder coated silver, black, white etc.
- 6) Suitable places: Outdoor corridor, outdoor wall, garden etc.



LY2001A



316 marine grade S/S



Alu.powder coated black



Alu.powder coated silver



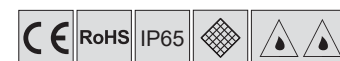
brass

Model	Voltage	Lampholder	Lamp	Watt
LY2001A	240V/120V	G9/LED	G9 halogen lamp	Max.20W
			12xSMD LEDS	2.4W
	12V	G4/LED	JC halogen lamp	Max.20W
			12xSMD LEDS	2.4W



SPECIFICATION

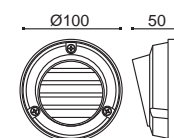
- 1) Stainless steel, brass or die-casting aluminum body
- 2) Tempered glass diffuser
- 3) IP65 protection class
- 4) Sealed with silicone rubber gasket
- 5) Special remark:
 - Stainless steel grade includes 316 marine grade and 304 grade
 - Stainless steel body is electrophoresis finishing
 - Die-casting aluminum body is powder coated silver, black, white etc.
- 6) Suitable places: Outdoor corridor, outdoor wall, garden etc.



LY2001B



316 marine grade S/S



Alu.powder coated black



Alu.powder coated silver

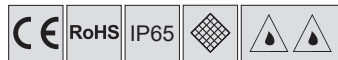


antique brass

Model	Voltage	Lampholder	Lamp	Watt
LY2001B	240V/120V	LED	12xSMD LEDS	2.4W
	12V	G4/LED	JC halogen lamp	Max.20W
			12xSMD LEDS	2.4W

SPECIFICATION

- 1) Stainless steel or die-casting aluminum body
- 2) Tempered glass diffuser
- 3) IP65 protection class
- 4) Sealed with silicone rubber gasket
- 5) Special remark:
 - Stainless steel grade includes 316 marine grade and 304 grade
 - Stainless steel body is electrophoresis finishing
 - Die-casting aluminum body is powder coated silver, black, white etc.
- 6) Suitable places: Outdoor corridor, outdoor wall, garden etc.



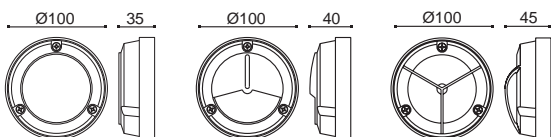
LY2001D



LY2001C



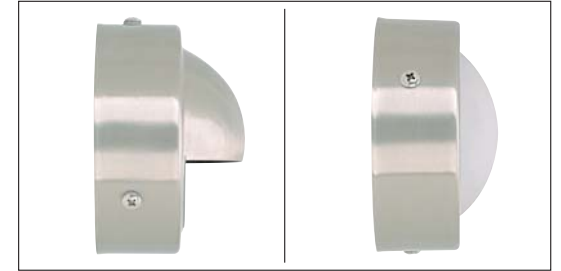
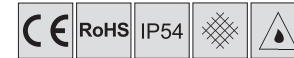
LY2001E



Model	Voltage	Lampholder	Lamp	Watt
LY2001C	240V/120V	LED	12xSMD LEDS	2.4W
LY2001D	12V	G4/LED	JC halogen lamp	Max.20W
LY2001E			12xSMD LEDS	2.4W

SPECIFICATION

- 1) Stainless steel or copper body
- 2) Tempered glass diffuser
- 3) IP54 protection class
- 4) Sealed with silicone rubber gasket
- 5) Special remark:
 - Stainless steel grade includes 316 marine grade and 304 grade
 - Stainless steel body is electrophoresis finishing
- 6) Suitable places: Outdoor corridor, outdoor wall, garden etc.



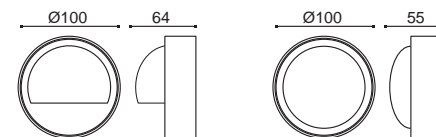
LY2101-SS



LY2101-CP



LY2102

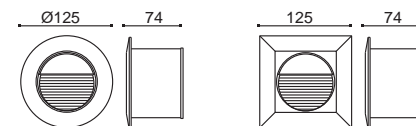


Model	Voltage	Lampholder	Lamp	Watt
LY2101	240V/120V	G9/LED	G9 halogen lamp	Max.20W
LY2102	12V	G4/LED	12xSMD LEDS	2.4W
			JC halogen lamp	Max.20W
			12xSMD LEDS	2.4W



SPECIFICATION

- 1) Die-casting aluminum body
- 2) PC diffuser
- 3) IP54 protection class
- 4) Special remark:
 - Die-casting aluminum body can be powder coated silver, black etc.
 - Sealed with silicone rubber gasket
 - A plastic housing included
- 5) Suitable places: Outdoor corridor, Garden etc.



LY2002A

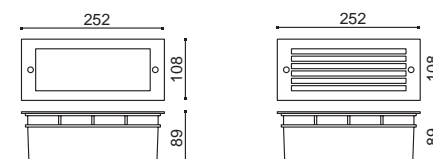


LY2002B

Model	Voltage	Lampholder	Lamp	Watt
LY2002	240V/120V	LED	14xSMD LEDS	0.84W

SPECIFICATION

- 1) Stainless steel face, die-casting aluminum body
- 2) Frosted tempered glass diffuser
- 3) IP54 protection class
- 4) Special remark:
 - Stainless steel grade includes 316 marine grade and 304 grade
 - Stainless steel body is electrophoresis finishing
 - Sealed with silicone rubber gasket
 - A plastic housing included
- 5) Suitable places: Outdoor corridor, Garden etc.



LY2003A



LY2003B

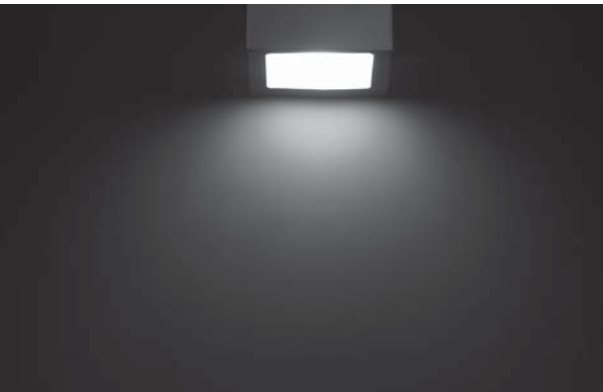


Model	Voltage	Lampholder	Lamp	Watt
LY2003	240V/120V	E27	E27 halogen lamp	Max.60W
			E27 energy-saving lamp	Max.13W
			E27 high power LED lamp	Max.10W
	240V/120V	LED	80xSMD LEDS	Max.6.5W

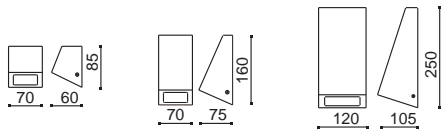


SPECIFICATION

- 1) Stainless steel or copper body
- 2) Tempered glass diffuser
- 3) IP54 protection class
- 4) Special remark:
 - Stainless steel grade includes 316 marine grade and 304 grade
 - Stainless steel body is electrophoresis finishing
 - Sealed with silicone rubber gasket
- 5) Suitable places: Outdoor corridor, Garden etc.



Model	Voltage	Lampholder	Lamp	Watt
LY2006A	12V	G4	JC halogen lamp	Max.20W
LY2006B	240V/120V	GU10	GU10 halogen lamp	Max.35W
			GU10 high power LED lamp	Max.5W
LY2006C	240V/120V	E27	E27 halogen lamp	Max.60W
			E27 high power LED lamp	Max.10W



LY2006A-SS



LY2006B-SS



LY2006C-SS



LY2006A-CP



LY2006B-CP



LY2006C-CP



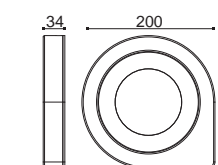
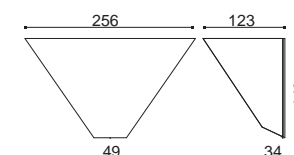
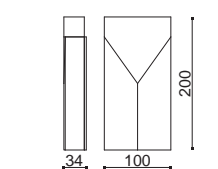
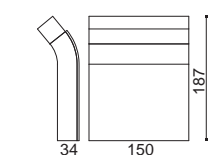
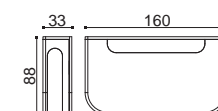
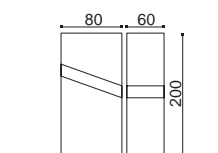
SPECIFICATION

- 1) Stainless steel or aluminum body
- 2) PC diffuser
- 3) Sealed with silicone rubber gasket
- 4) Suitable places: Indoor corridor etc.



Indoor Application

Model	Voltage	Lampholder	Lamp
LY2009	240V/120V/12V	LED	SMD LEDS
LY2010	240V/120V/12V	LED	SMD LEDS
LY2011	240V/120V/12V	LED	SMD LEDS
LY2012	240V/120V/12V	LED	SMD LEDS
LY2013	240V/120V/12V	LED	SMD LEDS
LY2014	240V/120V/12V	LED	SMD LEDS



LY2009



LY2010



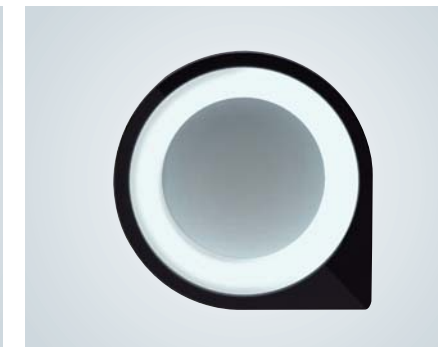
LY2011



LY2012



LY2013



LY2014

SPECIFICATION

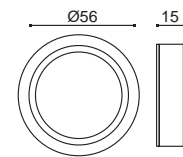
- 1) Anodised aluminum body
- 2) Frosted tempered glass diffuser
- 3) IP54 protection class
- 4) Anodised aluminum body can be clear anodised, gold anodised, brown anodised, titanium anodised, black anodised etc.
- 5) Sealed with silicone rubber gasket
- 6) Suitable places: Cabinet etc.



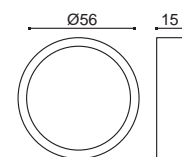
LY2005A



LY2005B



LY2005C



Model	Voltage	Lampholder	Lamp	Watt
LY2005	240V/120V/12V	LED	7xSMD LEDS	1.4W



SHANGHAI



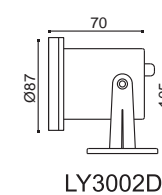
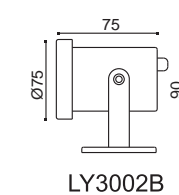
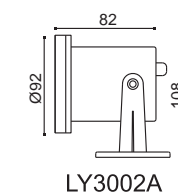
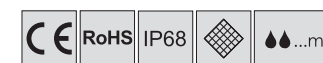
POND LIGHT, POOL LIGHT AND FOUNTAIN LIGHT





SPECIFICATION

- 1) Stainless steel or brass casting body
- 2) Tempered glass diffuser
- 3) IP68 protection class
- 4) Special remark:
 - Stainless steel grade includes 316 marine grade and 304 grade
 - Stainless steel body is electrophoresis finishing
 - Sealed with silicone rubber gasket
 - 4m cable included
- 5) Suitable places: Pond, Pool etc.

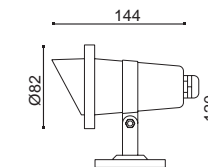
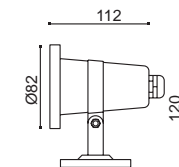
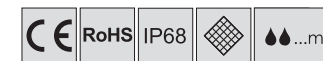


Model	Voltage	Lampholder	Lamp	Watt
LY3002	12V	GX5.3	MR16 halogen lamp	Max.20W
			MR16 high power LED lamp	Max.5W



SPECIFICATION

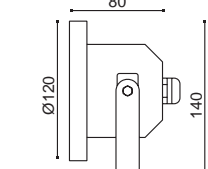
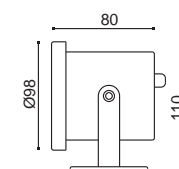
- 1) Stainless steel body
- 2) Tempered glass diffuser
- 3) IP68 protection class
- 4) Special remark:
 - Stainless steel grade includes 316 marine grade and 304 grade
 - Stainless steel body is electrophoresis finishing
 - Sealed with silicone rubber gasket
 - 4m cable included
- 5) Suitable places: Pond, Pool etc.



LY3001A



LY3001B



LY3002C



LY3003



Halogen

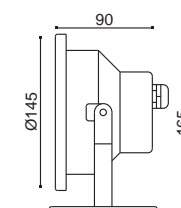
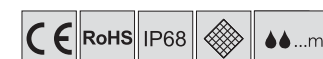
5x1W

Model	Voltage	Lampholder	Lamp	Watt
LY3001/LY3002	12V	GX5.3	MR16 halogen lamp	Max.20W
LY3003	12V	LED	MR16 high power LED lamp	Max.5W
			High power LEDS	3x1W



SPECIFICATION

- 1) Stainless steel or brass casting body
- 2) Tempered glass diffuser
- 3) IP68 protection class
- 4) Special remark:
 - Stainless steel grade includes 316 marine grade and 304 grade
 - Stainless steel body is electrophoresis finishing
 - Sealed with silicone rubber gasket
 - Monocolour or RGB, built in LED driver
 - Including a stainless steel mirror plane to fix LED lens
 - 4m cable included
- 5) Suitable places: Pond, Pool, Fountain etc.



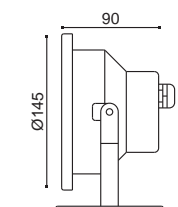
LY3005A-BR



LY3005A

SPECIFICATION

- 1) Stainless steel body
- 2) Tempered glass diffuser
- 3) IP68 protection class
- 4) Special remark:
 - Stainless steel grade includes 316 marine grade and 304 grade
 - Stainless steel body is electrophoresis finishing
 - Sealed with silicone rubber gasket
 - Monocolour or RGB, built in LED driver
 - Including a stainless steel mirror plane to fix LED lens
 - 4m cable included
- 5) Suitable places: Pond, Pool, Fountain etc.



LY3005D



PAR36



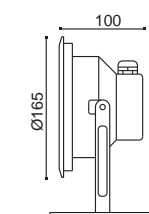
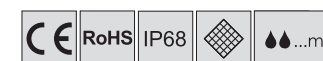
6x1W

Model	Voltage	Lampholder	Lamp	Watt
LY3005	12V	PAR36/LED	PAR36 halogen lamp High power LEDs	Max.100W 6x1W



SPECIFICATION

- 1) Stainless steel body
- 2) Tempered glass diffuser
- 3) IP68 protection class
- 4) Special remark:
 - Stainless steel grade includes 316 marine grade and 304 grade
 - Stainless steel body is electrophoresis finishing
 - Sealed with silicone rubber gasket
 - Monocolour or RGB, built in LED driver
 - Including a stainless steel mirror plane to fix LED lens
 - 4m cable included
- 5) Suitable places: Pond, Pool, Fountain etc.



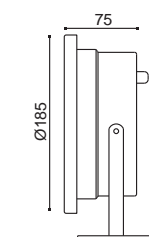
Model	Voltage	Lampholder	Lamp	Watt
LY3007	12V	LED	High power LEDS	9x1W



LY3007

SPECIFICATION

- 1) Stainless steel body
- 2) Tempered glass diffuser
- 3) IP68 protection class
- 4) Special remark:
 - Stainless steel grade includes 316 marine grade and 304 grade
 - Stainless steel body is electrophoresis finishing
 - Sealed with silicone rubber gasket
 - Monocolour or RGB, built in LED driver
 - Including a stainless steel mirror plane to fix LED lens
 - 4m cable included
- 5) Suitable places: Pond, Pool, Fountain etc.



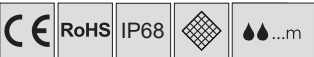
Model	Voltage	Lampholder	Lamp	Watt
LY3008	12V	LED	High power LEDS	12x1W



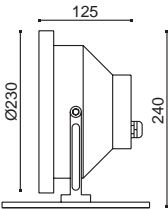
LY3008



- SPECIFICATION**
- 1) Stainless steel casting body
 - 2) Tempered glass diffuser
 - 3) IP68 protection class
 - 4) Special remark:
 - Stainless steel grade includes 316 marine grade and 304 grade
 - Stainless steel body is electrophoresis finishing
 - Sealed with silicone rubber gasket
 - 4m cable included
 - 5) Suitable places: Pond, Pool, Fountain etc.



LY3009



Model	Voltage	Lampholder	Lamp	Watt
LY3009	12V	PAR56	PAR56 Halogn lamp	Max.300W



SPECIFICATION

- 1) Stainless steel casting body
- 2) Flush tempered glass diffuser
- 3) IP68 protection class
- 4) Special remark:
 - Stainless steel grade includes 316 marine grade and 304 grade
 - Stainless steel body is electrophoresis finishing
 - Sealed with silicone rubber gasket
 - Monocolour or RGB, built in LED driver
 - Including a stainless steel mirror plane to fix LED lens
 - 4m cable included
- 5) Suitable places: Pond, Pool, Fountain etc.



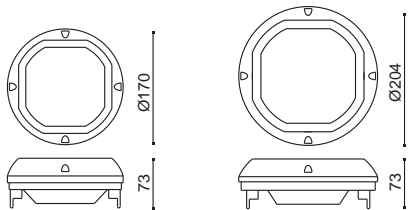
Model	Voltage	Lampholder	Lamp	Watt
LY3010A	12V	LED	High power LEDS	18x1W
LY3010B	12V	LED	High power LEDS	30x1W



LY3010A



LY3010B



SPECIFICATION

- 1) Stainless steel casting body
- 2) Flush Tempered glass diffuser
- 3) IP68 protection class
- 4) Special remark:
 - Stainless steel grade includes 316 marine grade and 304 grade
 - Stainless steel body is electrophoresis finishing
 - Sealed with silicone rubber gasket
 - Monocolour or RGB, built in LED driver
 - Including a stainless steel mirror plane to fix LED lens
 - 4m cable included
- 5) Suitable places: Pond, Pool, Fountain etc.



Model	Voltage	Lampholder	Lamp	Watt
LY3012	12V	LED	High power LEDS	18x1W

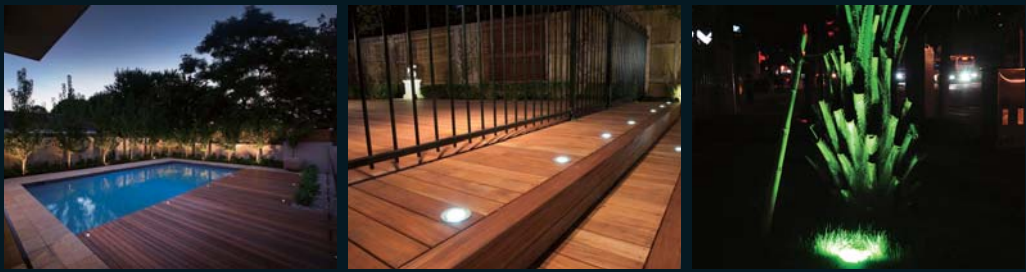


Stainless steel brush finishing

Stainless steel black finishing



DECK LIGHT, IN-GROUND LIGHT



DECK LIGHT, IN-GROUND LIGHT

SPECIFICATION

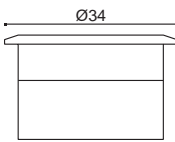
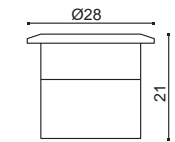
- 1) Stainless steel body
- 2) Flush tempered glass diffuser
- 3) IP67 protection class
- 4) Special remark:
 - Stainless steel grade includes 316 marine grade and 304 grade
 - Stainless steel body is electrophoresis finishing
 - Sealed with silicone rubber gasket
 - Kit containing 3 or 6 pieces of single deck light, transformer and connection box
 - The fitting cable length is according to client's application requirement
- 5) Suitable places: Interior deck, Exterior deck etc.



LY4001B



LY4001C

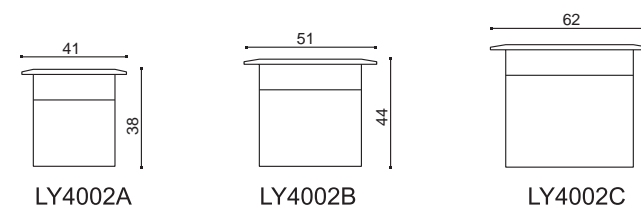


Model	Voltage	Lampholder	Lamp	Watt
LY4001B	12V	LED	3xSMD LEDS	0.18W
LY4001C	12V	LED	6xSMD LEDS	0.36W



SPECIFICATION

- 1) Stainless steel or aluminum body
- 2) Flush tempered glass diffuser
- 3) IP67 protection class
- 4) Special remark:
 - Stainless steel grade includes 316 marine grade and 304 grade
 - Stainless steel body is electrophoresis finishing
 - Sealed with silicone rubber gasket
 - Kit containing 3 or 6 pieces of single deck light, transformer and connection box
 - The fitting cable length is according to client's application requirement
- 5) Suitable places: Interior deck, Exterior deck etc.



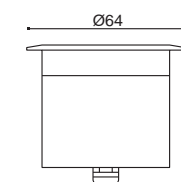
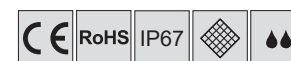
Model	Voltage	Lampholder	Lamp	Watt
LY4002A	12V	LED	3xSMD LEDS	0.18W
LY4002B	12V	LED	6xSMD LEDS	0.36W
			High power LEDS	1W
LY4002C	12V	LED	9xSMD LEDS	0.54W
			High power LEDS	1W/3W





SPECIFICATION

- 1) Stainless steel or anodised aluminum body
- 2) LED lens diffuser
- 3) IP67 protection class
- 4) Special remark:
 - Stainless steel grade includes 316 marine grade and 304 grade
 - Stainless steel body is electrophoresis finishing
 - Sealed with silicone rubber gasket
 - Anodised aluminum body can be clear anodised, gold anodised, brown anodised, titanium anodised, black anodised etc.
 - The fitting cable length is according to client's application requirement
- 5) Suitable places: Interior deck, Exterior deck, Garden, Path etc.



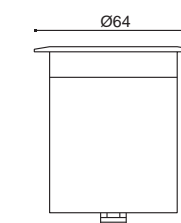
LY4202-SS



LY4202-AN-BL

LY4202-AN-BW

LY4202-AN



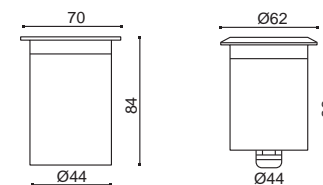
Model	Voltage	Lampholder	Lamp	Watt
LY4202	240V/120V/12V	LED	High power LEDS	1W/3W



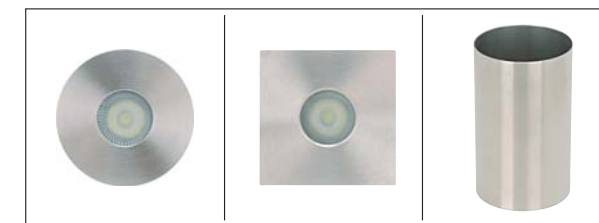
DECK LIGHT, IN-GROUND LIGHT

SPECIFICATION

- 1) Stainless steel body
- 2) Tempered glass diffuser
- 3) IP67 protection class
- 4) Special remark:
 - Stainless steel grade includes 316 marine grade and 304 grade
 - Stainless steel body is electrophoresis finishing
 - Sealed with silicone rubber gasket
 - A plastic or stainless steel housing included
- 5) Suitable places: Interior deck, Exterior deck, Garden, Path etc.

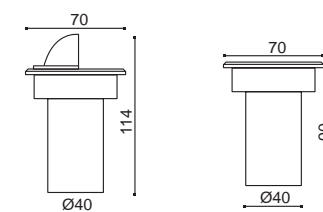


Model	Voltage	Lampholder	Lamp	Watt
LY4003	12V	G4/LED	MR11 halogen lamp	Max.20W
			MR11 LED lamp	1W
	240V/120V/12V	LED	6x SMD LEDs	1.2W
			High power LEDS	1W/3W



SPECIFICATION

- 1) Stainless steel face, die-casting aluminum body
- 2) Tempered glass diffuser
- 3) IP67 protection class
- 4) Special remark:
 - Stainless steel grade includes 316 marine grade and 304 grade
 - Stainless steel face is electrophoresis finishing
 - Sealed with silicone rubber gasket
 - A plastic housing included
- 5) Suitable places: Interior deck, Exterior deck, Garden, Path etc.



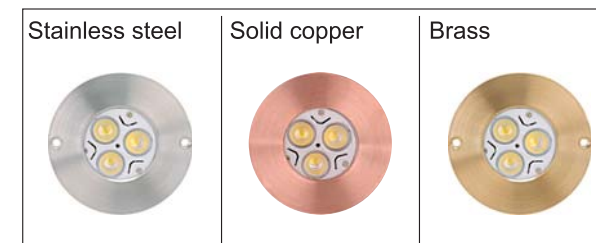
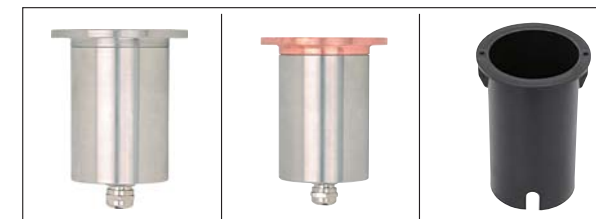
Model	Voltage	Lampholder	Lamp	Watt
LY4303	12V	G4/LED	MR11 halogen lamp	Max.20W
			MR11 LED lamp	1W
	240V/120V/12V	LED	6x SMD LEDs	1.2W
			High power LEDS	1W/3W





SPECIFICATION

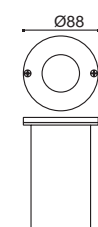
- 1) Stainless steel/brass/copper face, stainless steel body
- 2) Tempered glass diffuser
- 3) IP67 protection class
- 4) Special remark:
 - The thickness of fitting body is 5mm
 - Stainless steel grade includes 316 marine grade and 304 grade
 - Stainless steel face is electrophoresis finishing
 - Sealed with silicone rubber gasket
 - A plastic housing included
- 5) Suitable places: Garden, Outdoor Square, Park, Path etc.



LY4004A



LY4104A



Halogen 5x1W

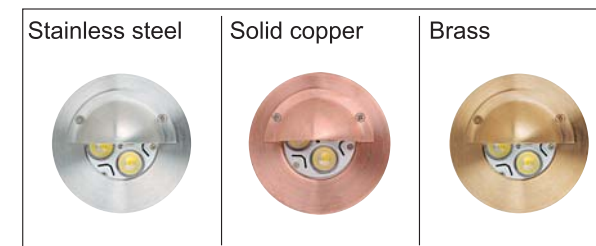
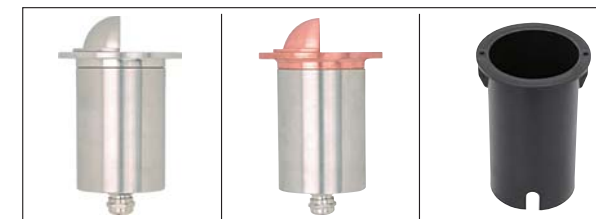
Model	Voltage	Lampholder	Lamp	Watt
LY4004A	240V/120V	GU10	GU10 halogen lamp	Max.35W
			GU10 high power LED lamp	Max.5W
LY4104A	12V	GX5.3	MR16 halogen lamp	Max.20W
			MR16 high power LED lamp	Max.5W



DECK LIGHT, IN-GROUND LIGHT

SPECIFICATION

- 1) Stainless steel/brass/copper face, stainless steel body
- 2) Tempered glass diffuser
- 3) IP67 protection class
- 4) Special remark:
 - The thickness of fitting body is 5mm
 - Stainless steel grade includes 316 marine grade and 304 grade
 - Stainless steel face is electrophoresis finishing
 - Sealed with silicone rubber gasket
 - A plastic housing included
- 5) Suitable places: Garden, Outdoor Square, Park, Path etc.



LY4004B



LY4104B



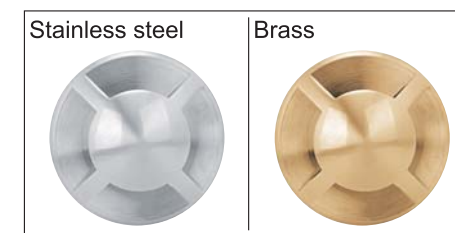
Model	Voltage	Lampholder	Lamp	Watt
LY4004B	240V/120V	GU10	GU10 halogen lamp	Max.35W
			GU10 high power LED lamp	Max.5W
LY4104B	12V	GX5.3	MR16 halogen lamp	Max.20W
			MR16 high power LED lamp	Max.5W



DECK LIGHT, IN-GROUND LIGHT

SPECIFICATION

- 1) Stainless steel/brass face, stainless steel body
- 2) Tempered glass diffuser
- 3) IP67 protection class
- 4) Special remark:
 - The thickness of fitting body is 5mm
 - Stainless steel grade includes 316 marine grade and 304 grade
 - Stainless steel face is electrophoresis finishing
 - Sealed with silicone rubber gasket
 - A plastic housing included
- 5) Suitable places: Garden, Outdoor Square, Park, Path etc.



LY4004C



LY4004D



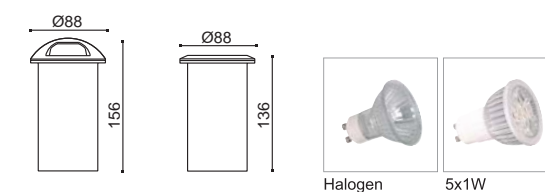
LY4004E



LY4004F



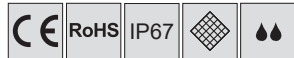
LY4004G



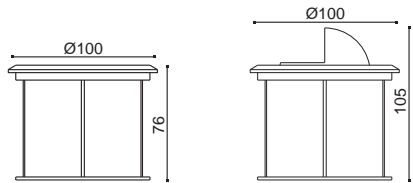
Model	Voltage	Lampholder	Lamp	Watt
LY4004	240V/120V	GU10	GU10 halogen lamp	Max.35W
			GU10 high power LED lamp	Max.5W
	12V	GX5.3	MR16 halogen lamp	Max.20W
			MR16 high power LED lamp	Max.5W

SPECIFICATION

- 1) Stainless steel face, die-casting aluminum / Stainless steel body
- 2) Tempered glass diffuser
- 3) IP67 protection class
- 4) Special remark:
 - Stainless steel grade includes 316 marine grade and 304 grade
 - Stainless steel face is electrophoresis finishing
 - Sealed with silicone rubber gasket
 - A plastic housing included
- 5) Suitable places: Garden, Outdoor Square, Park, Path etc.



Model	Voltage	Lampholder	Lamp	Watt
LY4005	12V	G4	JC halogen lamp	Max.20W
	240V/120V/12V	LED	6xSMD LEDS	1.2W



LY4005A

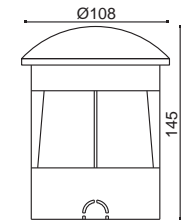


LY4005B



SPECIFICATION

- 1) Stainless steel face, die-casting aluminum / Stainless steel body
- 2) Tempered glass diffuser
- 3) IP67 protection class
- 4) Special remark:
 - Stainless steel grade includes 316 marine grade and 304 grade
 - Stainless steel face is electrophoresis finishing
 - Sealed with silicone rubber gasket
 - A plastic housing included
- 5) Suitable places: Garden, Outdoor Square, Park, Path etc.



LY4006C



LY4006D



LY4006E



LY4006F



LY4006G



Halogen

5x1W

Model	Voltage	Lampholder	Lamp	Watt
LY4006	240V/120V	GU10	GU10 halogen lamp	Max.35W
			GU10 high power LED lamp	Max.5W
	12V	GX5.3	MR16 halogen lamp	Max.20W
			MR16 high power LED lamp	Max.5W



SPECIFICATION

- 1) Stainless steel face, die-casting aluminum / Stainless steel body
- 2) Tempered glass diffuser
- 3) IP67 protection class
- 4) Special remark:
 - Stainless steel grade includes 316 marine grade and 304 grade
 - Stainless steel face is electrophoresis finishing
 - Sealed with silicone rubber gasket
 - A plastic housing included
- 5) Suitable places: Garden, Outdoor Square, Park, Path etc.



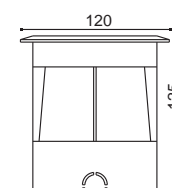
Stainless steel black finishing



Halogen

5x1W

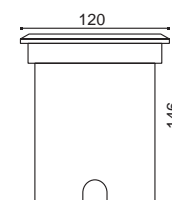
Model	Voltage	Lampholder	Lamp	Watt
LY4006	240V/120V	GU10	GU10 halogen lamp	Max.35W
			GU10 high power LED lamp	Max.5W
LY4106	12V	GX5.3	MR16 halogen lamp	Max.20W
			MR16 high power LED lamp	Max.5W



LY4006A



LY4006B



LY4106A



LY4106B

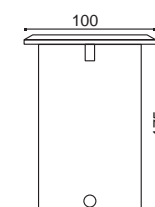


SPECIFICATION

- 1) Stainless steel face, Stainless steel body
- 2) Tempered glass diffuser
- 3) IP67 protection class
- 4) Special remark:
 - Stainless steel grade includes 316 marine grade and 304 grade
 - Stainless steel face is electrophoresis finishing
 - Sealed with silicone rubber gasket
 - A plastic housing included
- 5) Suitable places: Garden, Outdoor Square, Park, Path etc.



Stainless steel black finishing



LY4206A



LY4206B



Halogen

5x1W

5x2W

Model	Voltage	Lampholder	Lamp	Watt
LY4206	240V/120V	GU10	GU10 halogen lamp	Max.35W
			GU10 high power LED lamp	Max.10W
	12V	GX5.3	MR16 halogen lamp	Max.20W
			MR16 high power LED lamp	Max.10W



SPECIFICATION

- 1) Stainless steel face, die-casting aluminum body
- 2) Tempered glass diffuser
- 3) IP67 protection class
- 4) Special remark:
 - Stainless steel grade includes 316 marine grade and 304 grade
 - Stainless steel face is electrophoresis finishing
 - Sealed with silicone rubber gasket
 - Monocolour or RGB, built in LED driver
 - Including a stainless steel mirror plane to fix LED lens
 - A plastic housing included
- 5) Suitable places: Garden, Outdoor Square, Park, Path etc.



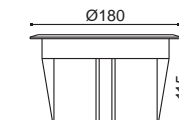
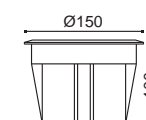
LY4007A



LY4008A



Stainless steel black finishing

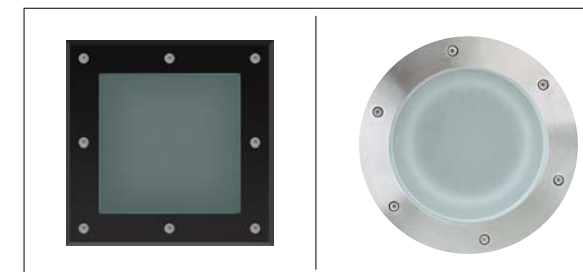


Model	Voltage	Lampholder	Lamp	Watt
LY4007A	240V/120V/12V	LED	High power LEDS	6x1W
LY4008A	240V/120V/12V	LED	High power LEDS	12x1W

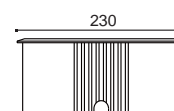
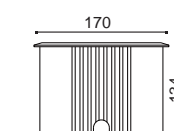


SPECIFICATION

- 1) Stainless steel face, die-casting aluminum body
- 2) Tempered glass diffuser
- 3) IP67 protection class
- 4) Special remark:
 - Stainless steel grade includes 316 marine grade and 304 grade
 - Stainless steel face is electrophoresis finishing
 - Sealed with silicone rubber gasket
 - Monocolour or RGB, built in LED driver
 - Including a stainless steel mirror plane to fix LED lens
 - A plastic housing included
- 5) Suitable places: Garden, Outdoor Square, Park, Path etc.



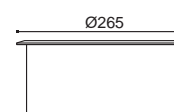
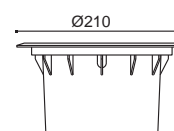
Stainless steel black finishing



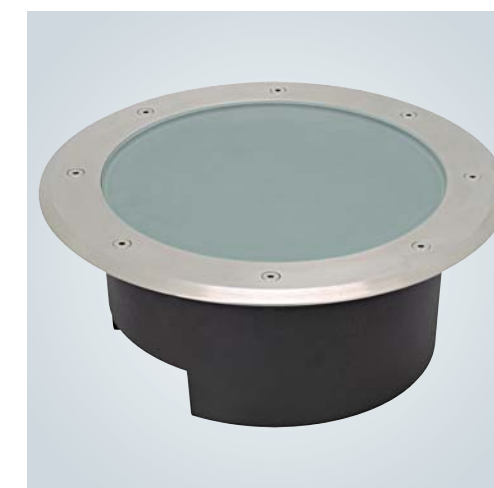
LY4016C



LY4016D



LY4010A



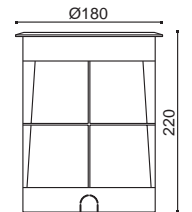
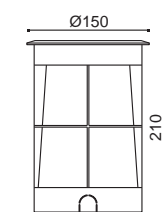
LY4013

Model	Voltage	Lampholder	Lamp	Watt
LY4016C	240V/120V/12V	LED	High power LEDS	9x1W
LY4016D	240V/120V/12V	LED	High power LEDS	16x1W
LY4010A	240V/120V/12V	LED	High power LEDS	18x1W
LY4013	240V/120V/12V	LED	High power LEDS	24x1W



SPECIFICATION

- 1) Stainless steel face, die-casting aluminum body
- 2) Tempered glass diffuser
- 3) IP67 protection class
- 4) Special remark:
 - Stainless steel grade includes 316 marine grade and 304 grade
 - Stainless steel face is electrophoresis finishing
 - Sealed with silicone rubber gasket
 - A plastic housing included
- 5) Suitable places: Garden, Outdoor Square, Park, Path etc.



LY4007B



LY4008B



Halogen

5x2W

7W

5x2W

Model	Voltage	Lampholder	Lamp	Watt
LY4007B	240V/120V	GU10	GU10 halogen lamp	Max.35W
			GU10 energy-saving lamp	Max.13W
			GU10 high power LED lamp	Max.10W
LY4008B	240V/120V	E27	E27 halogen lamp	Max.60W
			E27 energy-saving lamp	Max.13W
			E27 high power LED lamp	Max.10W

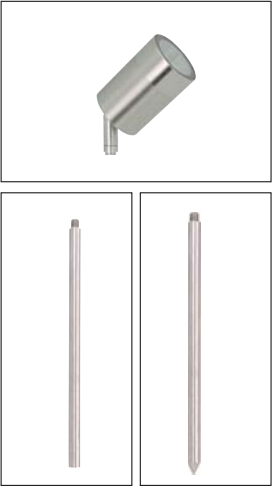


GARDEN LIGHT, LED FLOOD LIGHT

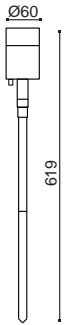


SPECIFICATION

- 1) Stainless steel body
- 2) Tempered glass diffuser
- 3) IP65 protection class
- 4) Special remark:
 - The thickness of fitting body is 1mm or 2mm
 - Stainless steel grade includes 316 marine grade and 304 grade
 - Stainless steel body is electrophoresis finishing
 - Sealed with silicone rubber gasket
 - 2m cable included
 - 2 x spikes included
- 5) Suitable places: Garden, Path, Park, Lawn etc.



LY5001D



Model	Voltage	Lampholder	Lamp	Watt
LY5001D	240V/120V	GU10	GU10 halogen lamp	Max.35W
			GU10 high power LED lamp	Max.5W
	12V	GX5.3	MR16 halogen lamp	Max.20W
			MR16 high power LED lamp	Max.5W



SPECIFICATION

- 1) Stainless steel, anodised aluminum, solid copper, brass or die-casting aluminum body
- 2) Tempered glass diffuser
- 3) IP65 protection class
- 4) Special remark:
 - The thickness of stainless steel, solid copper and brass fitting body is 5MM
 - The thickness of anodised and die-casting aluminum fitting body is 8MM
 - The stainless steel grade includes 316 marine grade and 304 grade
 - The stainless steel body is electrophoresis finishing
 - Anodised aluminum body can be clear anodised, gold anodised, brown anodised, titanium anodised, black anodised etc.
 - Die-casting aluminum body can be powder coated black, silver, white etc.
 - This light fitting can be used 65mm long LED lamp
 - Sealed with silicone rubber gasket
 - 2m cable included
 - 2 x spikes included
- 5) Suitable places: Garden, Path, Park, Lawn etc.



LY5001A



LY5001A-AN



LY5001A-AL-B



LY5001A-CP



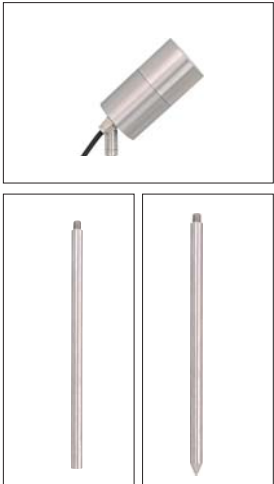
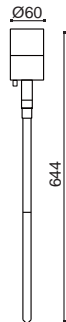
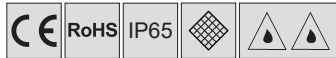
Halogen

5x1W

Model	Voltage	Lampholder	Lamp	Watt
LY5001A	240V/120V	GU10	GU10 halogen lamp	Max.35W
			GU10 high power LED lamp	Max.5W
	12V	GX5.3	MR16 halogen lamp	Max.20W
			MR16 high power LED lamp	Max.5W

SPECIFICATION

- 1) Stainless steel, anodised aluminum, solid copper, brass or die-casting aluminum body
- 2) Flush tempered glass diffuser
- 3) IP65 protection class
- 4) Special remark:
 - The thickness of fitting body is 3MM
 - The stainless steel grade includes 316 marine grade and 304 grade
 - The stainless steel body is electrophoresis finishing
 - Anodised aluminum body can be clear anodised, gold anodised, brown anodised, titanium anodised, black anodised etc.
 - Die-casting aluminum body can be powder coated black, silver, white etc.
 - This light fitting can be used 82mm long LED lamp
 - Sealed with silicone rubber gasket
 - 2m cable included
 - 2 x spikes included
- 5) Suitable places: Garden, Path, Park, Lawn etc.



LY5001C



316 marine grade S/S

solid copper

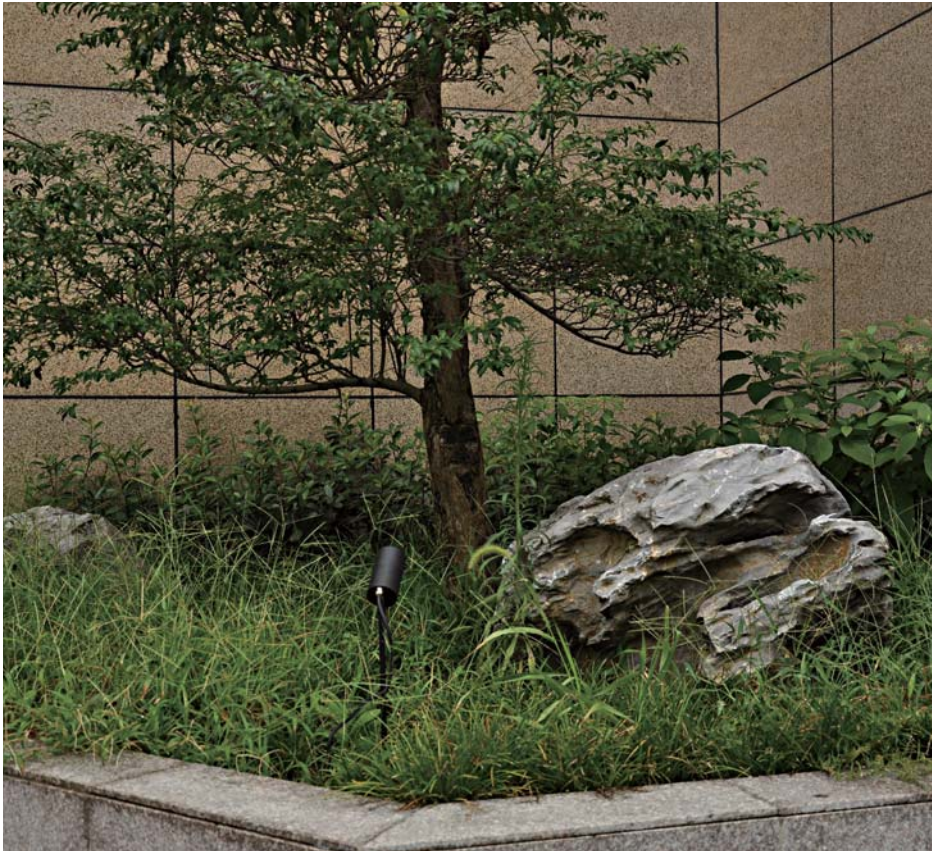
Alu. powder coated black

Alu. powder coated silver

Alu. powder coated white



black anodised



clear anodised

gold anodised

brown anodised

titanium anodised



Halogen

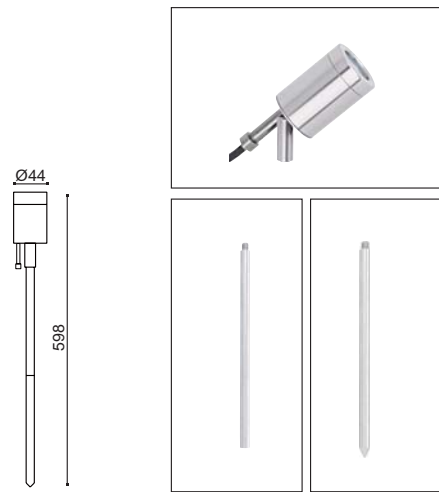
5x1W

5x2W

Model	Voltage	Lampholder	Lamp	Watt
LY5001C	240V/120V	GU10	GU10 halogen lamp	Max.35W
			GU10 energy-saving lamp	Max.13W
			GU10 high power LED lamp	Max.10W
	12V	GX5.3	MR16 halogen lamp	Max.20W
			MR16 high power LED lamp	Max.10W

SPECIFICATION

- 1) Stainless steel or anodised aluminum body
- 2) Tempered glass diffuser
- 3) IP65 protection class
- 4) Special remark:
 - The thickness of fitting body is 5.7MM
 - The stainless steel grade includes 316 marine grade and 304 grade
 - The stainless steel body is electrophoresis finishing
 - Anodised aluminum body can be clear anodised, gold anodised, brown anodised, titanium anodised, black anodised etc.
 - This light fitting can be used LED lamp
 - Sealed with silicone rubber gasket
 - 2m cable included
 - 2 x spikes included
- 5) Suitable places: Garden, Path, Park, Lawn etc.



LY5001B



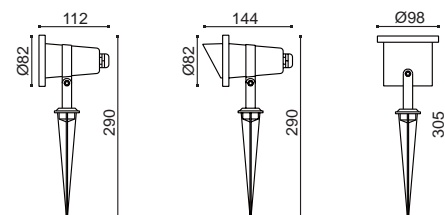


SPECIFICATION

- 1) Stainless steel body
- 2) Tempered glass diffuser
- 3) IP67 protection class
- 4) Special remark:
 - The stainless steel grade includes 316 marine grade and 304 grade
 - The stainless steel body is electrophoresis finishing
 - This light fitting can be used LED lamp
 - Sealed with silicone rubber gasket
 - 2m cable included
 - A spike included
- 5) Suitable places: Garden, Path, Park, Lawn etc.



Model	Voltage	Lampholder	Lamp	Watt
LY5002	12V	GX5.3	MR16 halogen lamp	Max.20W
LY5003C			MR16 high power LED lamp	Max.5W

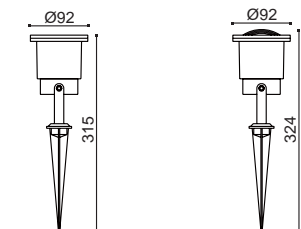


SPECIFICATION

- 1) Stainless steel casting body
- 2) Tempered glass diffuser
- 3) IP67 protection class
- 4) Special remark:
 - The stainless steel grade includes 316 marine grade and 304 grade
 - The stainless steel body is electrophoresis finishing
 - This light fitting can be used LED lamp
 - Sealed with silicone rubber gasket
 - 2m cable included
 - A spike included
- 5) Suitable places: Garden, Path, Park, Lawn etc.

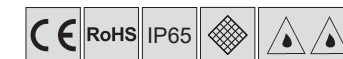


Model	Voltage	Lampholder	Lamp	Watt
LY5003A	12V	GX5.3	MR16 halogen lamp	Max.20W
LY5003D			MR16 high power LED lamp	Max.5W

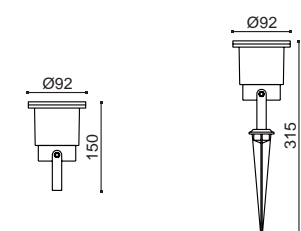


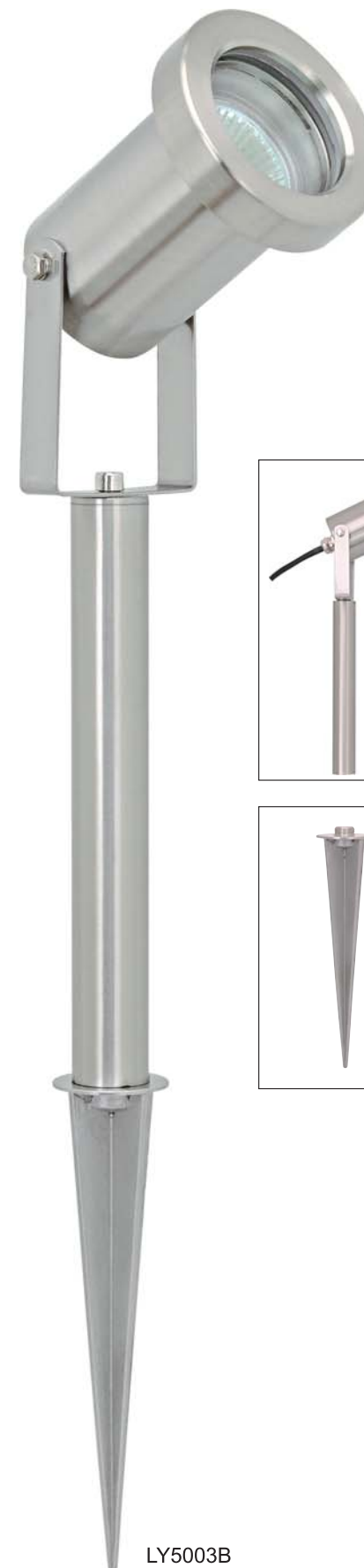
SPECIFICATION

- 1) Die-casting aluminum body
- 2) Tempered glass diffuser
- 3) IP65 protection class
- 4) Special remark:
 - Die-casting aluminum body can be powder coated black or silver
 - This light fitting can be used LED lamp
 - Sealed with silicone rubber gasket
 - 2m cable included
 - A spike included
- 5) Suitable places: Garden, Path, Park, Lawn etc.



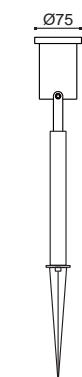
Model	Voltage	Lampholder	Lamp	Watt
LY5006	240V/120V	GU10	GU10 halogen lamp	Max.35W
			GU10 high power LED lamp	Max.5W
	12V	GX5.3	MR16 halogen lamp	Max.20W
			MR16 high power LED lamp	Max.5W



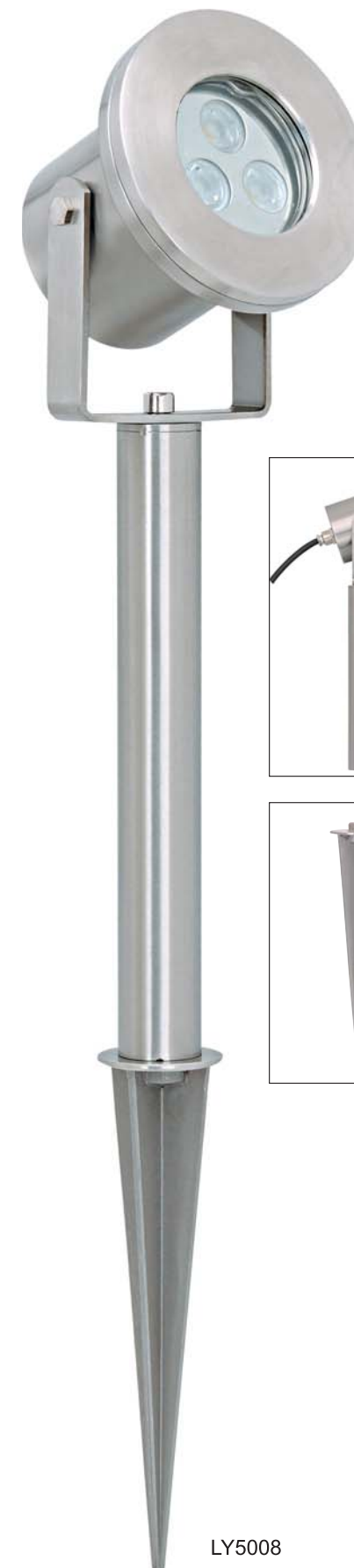


SPECIFICATION

- 1) Stainless steel casting body
- 2) Tempered glass diffuser
- 3) IP67 protection class
- 4) Special remark:
 - The stainless steel grade includes 316 marine grade and 304 grade
 - The stainless steel body is electrophoresis finishing
 - This light fitting can be used LED lamp
 - Sealed with silicone rubber gasket
 - 2m cable included
 - A spike and bollard included
- 5) Suitable places: Garden, Path, Park, Lawn etc.



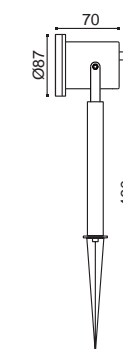
Model	Voltage	Lampholder	Lamp	Watt
LY5003B	240V/120V	GU10	GU10 halogen lamp	Max.35W
			GU10 high power LED lamp	Max.5W
	12V	GX5.3	MR16 halogen lamp	Max.20W
			MR16 high power LED lamp	Max.5W



LY5008

SPECIFICATION

- 1) Stainless steel casting body
- 2) Tempered glass diffuser
- 3) IP67 protection class
- 4) Special remark:
 - The stainless steel grade includes 316 marine grade and 304 grade
 - The stainless steel body is electrophoresis finishing
 - This light fitting can be used LED lamp
 - Sealed with silicone rubber gasket
 - 2m cable included
 - A spike and bollard included
- 5) Suitable places: Garden, Path, Park, Lawn etc.



Model	Voltage	Lampholder	Lamp	Watt
LY5008	240V/120V	GU10	GU10 halogen lamp	Max.35W
			GU10 high power LED lamp	Max.5W
	12V	GX5.3	MR16 halogen lamp	Max.20W
			MR16 high power LED lamp	Max.5W

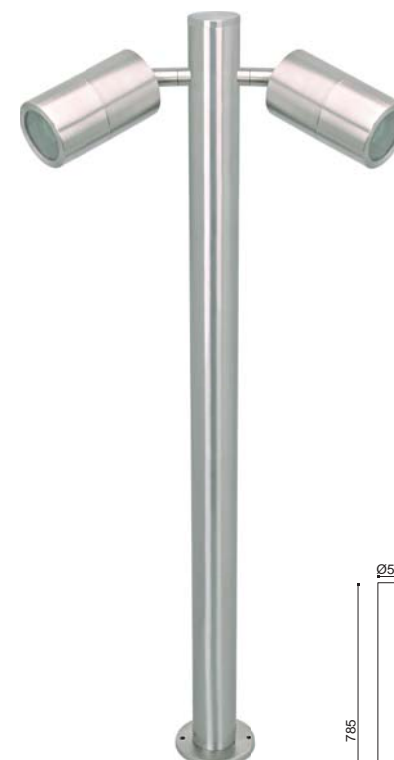


SPECIFICATION

- 1) Stainless steel body
- 2) Flush tempered glass diffuser
- 3) IP65 protection class
- 4) Special remark:
 - The thickness of fitting body is 3MM
 - The stainless steel grade includes 316 marine grade and 304 grade
 - The stainless steel body is electrophoresis finishing
 - This light fitting can be used 82mm long LED lamp
 - Sealed with silicone rubber gasket
 - 2m cable included
- 5) Suitable places: Garden, Path, Park, Lawn etc.



LY6001B



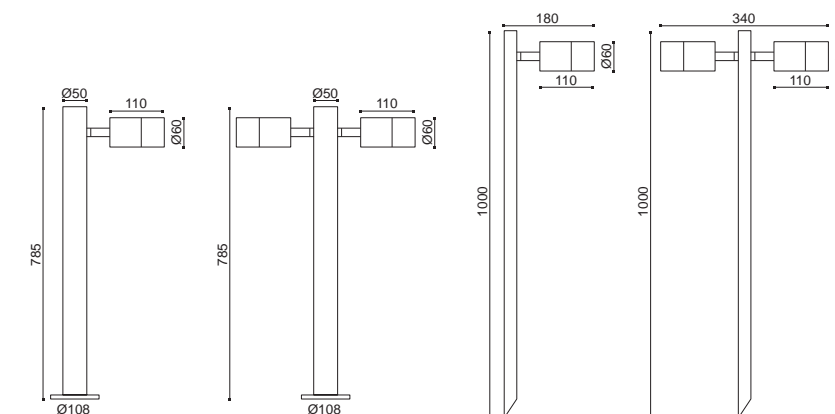
LY6001A



LY6002B



LY6002A



Halogen

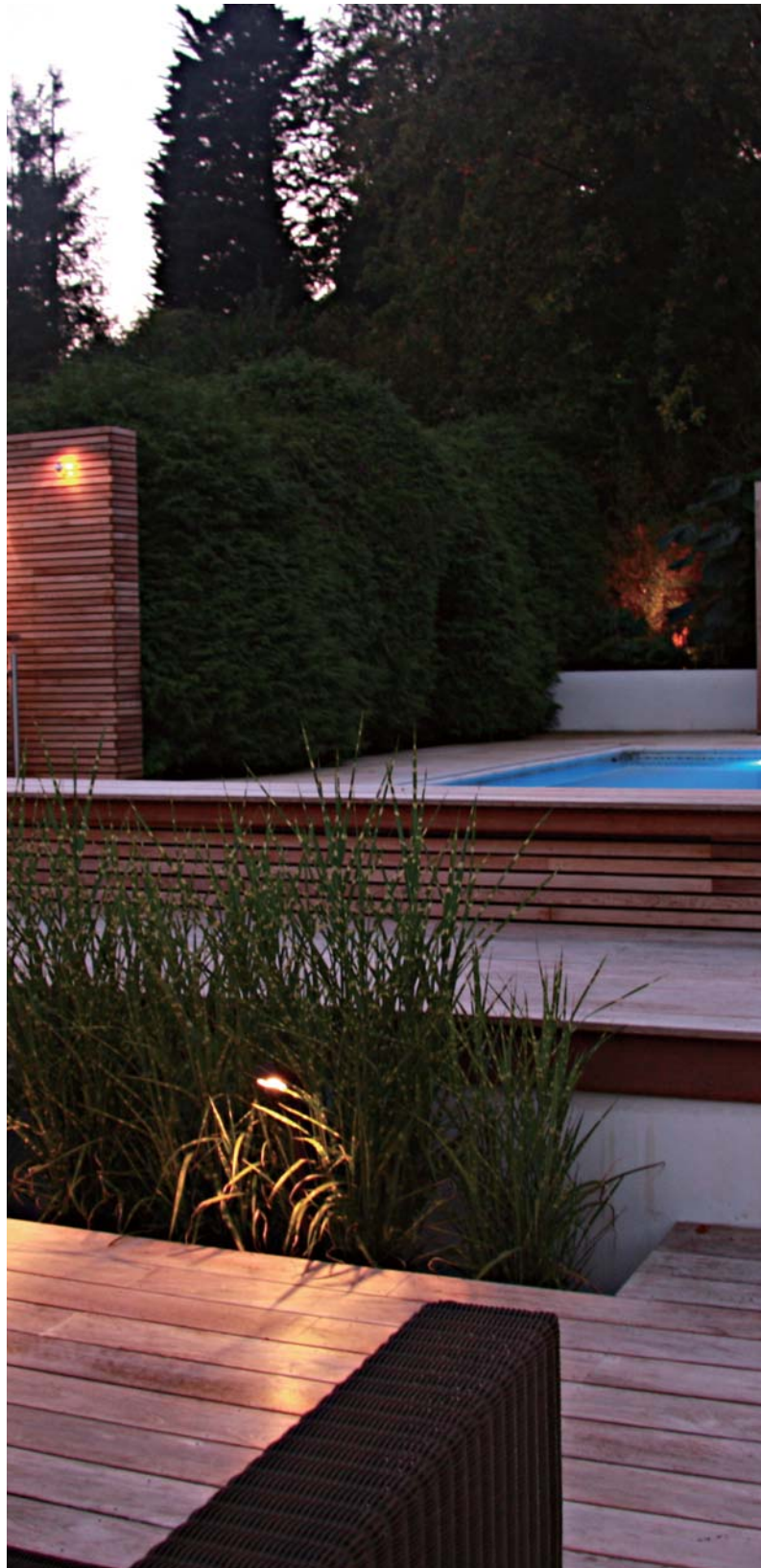


5x1W



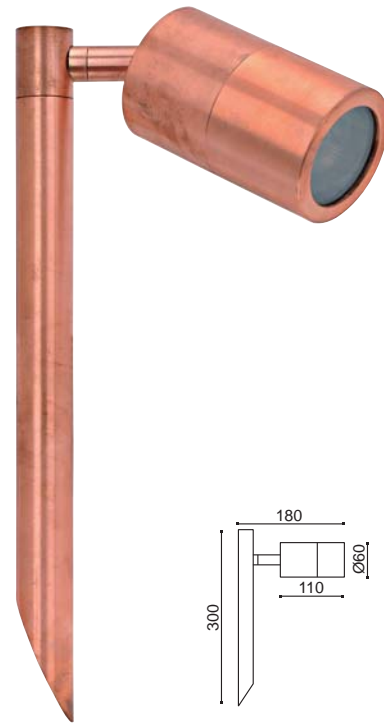
5x2W

Model	Voltage	Lampholder	Lamp	Watt
LY6001	240V/120V	GU10	GU10 halogen lamp	Max.35W
			GU10 energy-saving lamp	Max.13W
LY6002	12V	GX5.3	GU10 high power LED lamp	Max.10W
			MR16 halogen lamp	Max.20W
			MR16 high power LED lamp	Max.10W



SPECIFICATION

- 1) Solid copper body
- 2) Flush tempered glass diffuser
- 3) IP65 protection class
- 4) Special remark:
 - The thickness of fitting body is 3MM
 - This light fitting can be used 82mm long LED lamp
 - Sealed with silicone rubber gasket
 - 2m cable included
- 5) Suitable places: Garden, Path, Park, Lawn etc.



LY6002B-CP



Halogen

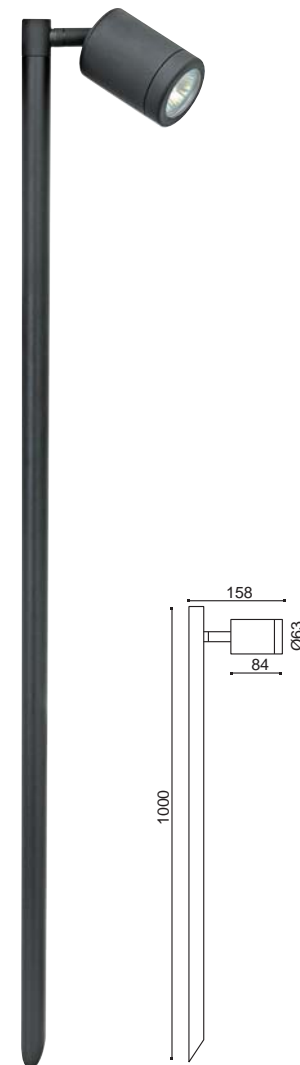
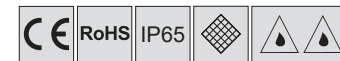
5x1W

5x2W

Model	Voltage	Lampholder	Lamp	Watt
LY6002B-CP	240V/120V	GU10	GU10 halogen lamp	Max.35W
			GU10 energy-saving lamp	Max.13W
			GU10 high power LED lamp	Max.10W
	12V	GX5.3	MR16 halogen lamp	Max.20W
			MR16 high power LED lamp	Max.10W

SPECIFICATION

- 1) Aluminum body
- 2) Tempered glass diffuser
- 3) IP65 protection class
- 4) Special remark:
 - The thickness of fitting body is 8MM
 - This light fitting can be used 65mm long LED lamp
 - Sealed with silicone rubber gasket
 - 2m cable included
- 5) Suitable places: Garden, Path, Park, Lawn etc.

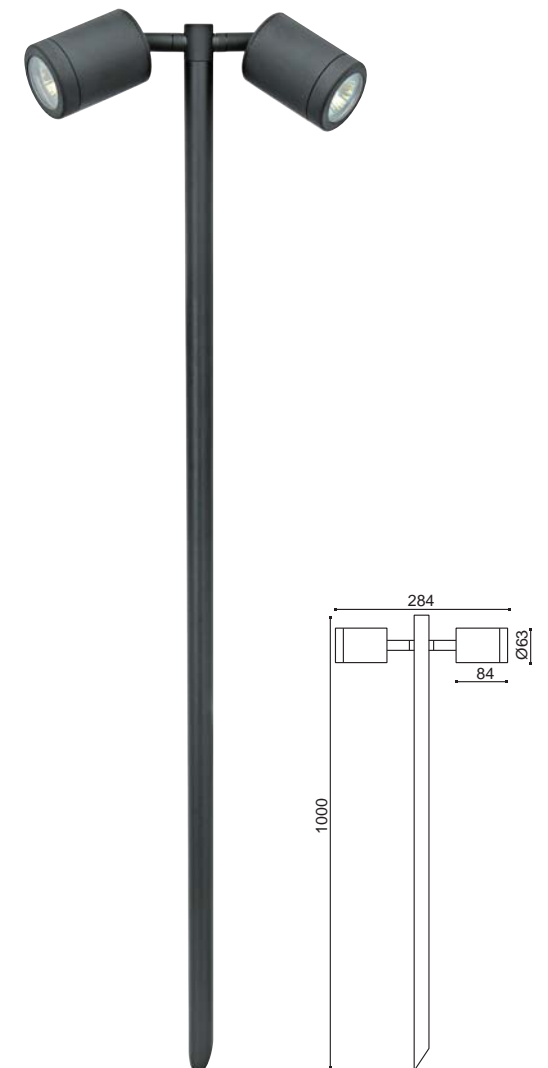


LY6002B-AL



Halogen

5x1W



LY6002A-AL

Model	Voltage	Lampholder	Lamp	Watt
LY6002	240V/120V	GU10	GU10 halogen lamp	Max.35W
			GU10 high power LED lamp	Max.5W
	12V	GX5.3	MR16 halogen lamp	Max.20W
			MR16 high power LED lamp	Max.5W



SPECIFICATION

- 1) Stainless steel or anodised aluminum body
- 2) Crystal diffuser
- 3) IP65 protection class
- 4) Special remark:
 - The thickness of fitting body is 4MM
 - The stainless steel grade includes 316 marine grade and 304 grade
 - The stainless steel body is electrophoresis finishing
 - Anodised aluminum body can be clear anodised, gold anodised, brown anodised, titanium anodised, black anodised etc.
 - This light fitting can be used LED lamp
 - Sealed with silicone rubber gasket
 - 2m cable included
 - A spike is available
- 5) Suitable places: Garden, Path, Park, Lawn etc.



LY6003



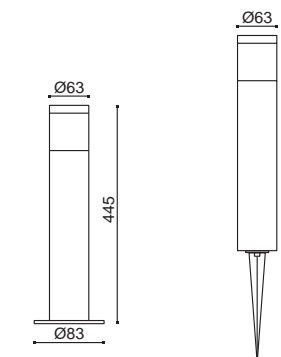
LY6003-AN



LY6103



LY6103-AN



Halogen



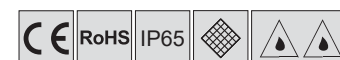
5x1W

Model	Voltage	Lampholder	Lamp	Watt
LY6003	240V/120V	GU10	GU10 halogen lamp	Max.35W
			GU10 high power LED lamp	Max.5W
LY6103	12V	GX5.3	MR16 halogen lamp	Max.20W
			MR16 high power LED lamp	Max.5W



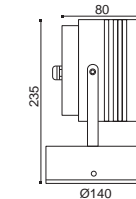
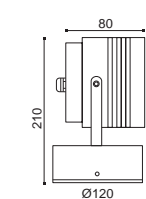
SPECIFICATION

- 1) Anodised aluminum body
- 2) Flush tempered glass diffuser
- 3) IP65 protection class
- 4) Sealed with silicone rubber gasket
- 5) Special remark:
 - Anodised aluminum body can be clear anodised, gold anodised, brown anodised, titanium anodised, black anodised, brush finishing etc.
 - Built in LED driver or external LED driver required
 - A installing base, spike or bollard included
- 5) Suitable places: Garden, Path, Park, Lawn etc.



LY6006G

LY6006H



LY6006D

LY6006E

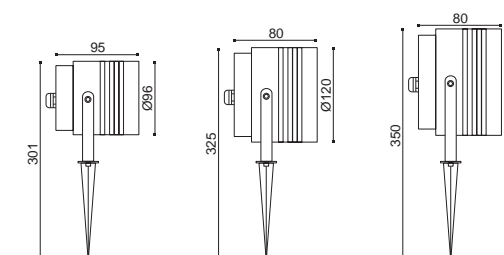
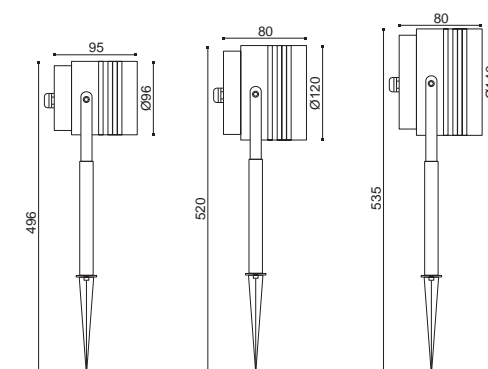
LY6006F



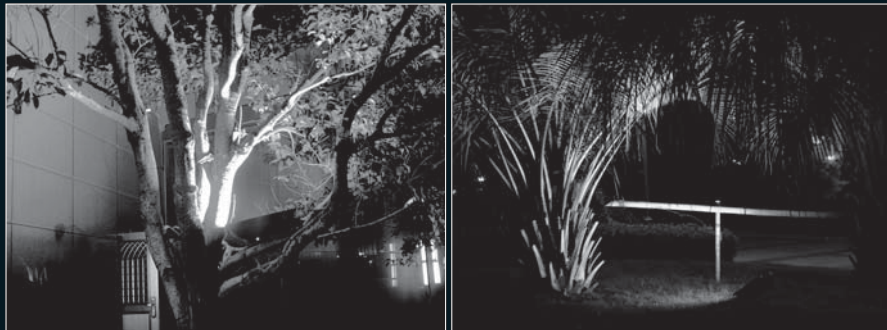
LY6006A

LY6006B

LY6006C

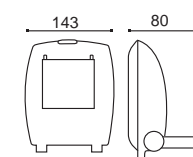


Model	Voltage	Lampholder	Lamp	Watt	Remark
LY6006A	240V/120V/12V	LED	High power LEDs	6x1W	Built in LED driver
LY6006B	240V/120V/12V	LED	High power LEDs	9x1W	Excluded LED driver
LY6006C	240V/120V/12V	LED	High power LEDs	15x1W	Excluded LED driver
LY6006D	240V/120V/12V	LED	High power LEDs	6x1W	Built in LED driver
LY6006E	240V/120V/12V	LED	High power LEDs	9x1W	Excluded LED driver
LY6006F	240V/120V/12V	LED	High power LEDs	15x1W	Excluded LED driver
LY6006G	240V/120V/12V	LED	High power LEDs	9x1W	Built in LED driver
LY6006H	240V/120V/12V	LED	High power LEDs	15x1W	Built in LED driver

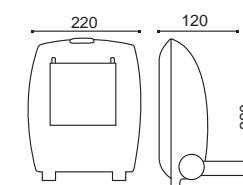


SPECIFICATION

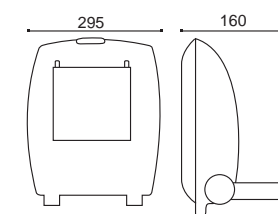
- 1) Die-casting aluminum body
- 2) Tempered glass diffuser
- 3) IP65 protection class
- 4) Sealed with silicone rubber gasket
- 5) Special remark:
 - Die-casting aluminum body can be powder coated black or silver
 - Supplied with flex & plug
 - Cool white, warm white, red, green, blue is available
- 6) Suitable places: Garden, Path, Park, Lawn etc.



LY6007A

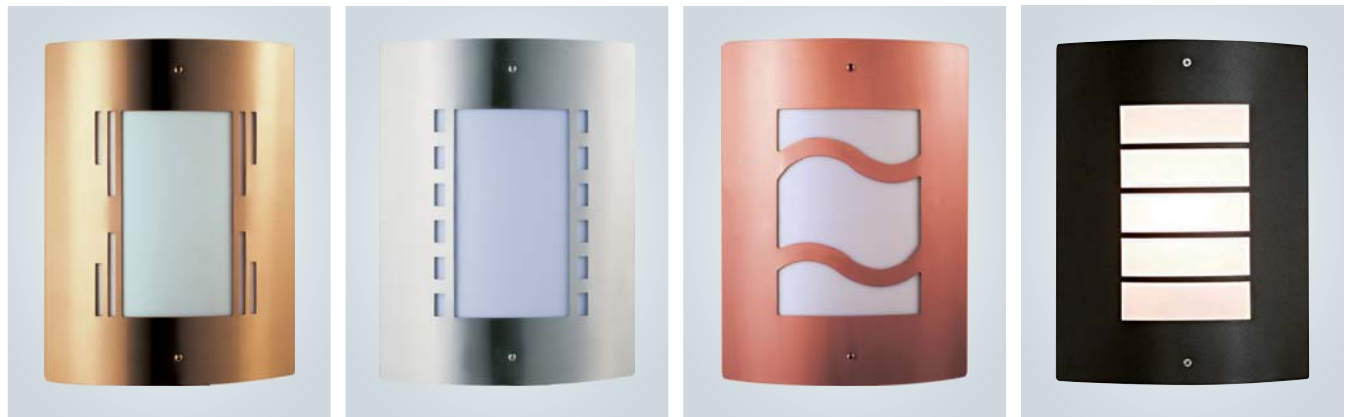


LY6007B



LY6007C

Model	Voltage	Lampholder	Lamp	Watt
LY6007A	240V/120V	LED	COB high power LEDS	10W
LY6007B	240V/120V	LED	COB high power LEDS	30W
LY6007C	240V/120V	LED	COB high power LEDS	50W



LY7007A

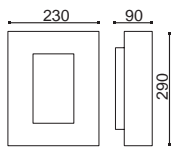
LY7007B

LY7007C

LY7007D

SPECIFICATION

- 1) Stainless steel body
- 2) PC diffuser
- 3) IP44 protection class
- 4) Sealed with silicone rubber gasket
- 5) Special remark:
 - Stainless steel body is electrophoresis finishing
 - Stainless steel body can be powder coated black or plated into gold, brown color
- 6) Suitable places: Garden, Path, Park, Lawn etc.



7W

Model	Voltage	Lampholder	Lamp	Watt
LY7007	240V/120V	E27	E27 halogen lamp	Max.60W
			E27 energy-saving lamp	Max.13W
			E27 high power LED lamp	Max.10W



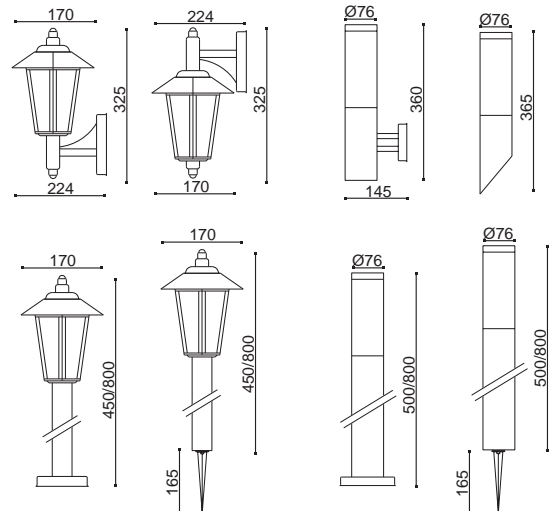
SPECIFICATION

- 1) Stainless steel body
- 2) PC/Tempered glass diffuser
- 3) IP44 protection class
- 4) Sealed with silicone rubber gasket
- 5) Stainless steel body is electrophoresis finishing
- 6) Suitable places: Garden, Path, Park, Lawn etc.



7W

Model	Voltage	Lampholder	Lamp	Watt
LY7002	240V/120V	E27	E27 halogen lamp	Max.60W
LY7006			E27 energy-saving lamp	Max.13W
			E27 high power LED lamp	Max.10W



LY7002A

LY7002B

LY7006A

LY7006B



LY7002C

LY7002D

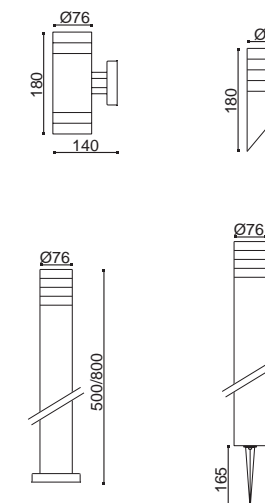
LY7006C

LY7006D



SPECIFICATION

- 1) Stainless steel body
- 2) PC diffuser
- 3) IP44 protection class
- 4) Sealed with silicone rubber gasket
- 5) Stainless steel body is electrophoresis finishing
- 6) Suitable places: Garden, Path, Park, Lawn etc.



Model	Voltage	Lampholder	Lamp	Watt
LY7003	240V/120V/12V	LED	Low power LEDS	Max. 2.88W
LY7004				



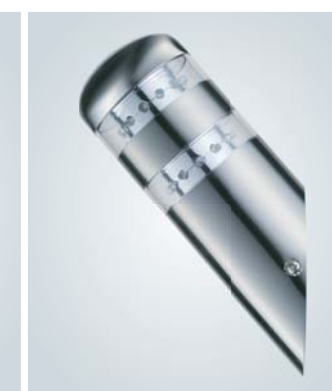
LY7003A



LY7003B



LY7004A



LY7004B



LY7003C



LY7003D



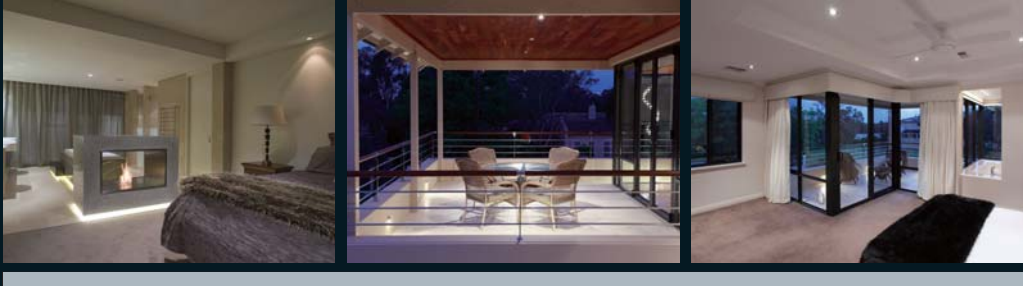
LY7004C



LY7004D

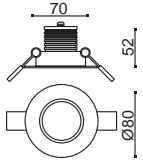


CEILING DOWNLIGHT



SPECIFICATION

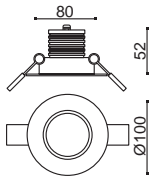
- 1) Anodised aluminum body
- 2) Tempered glass diffuser
- 3) IP65 protection class
- 4) Sealed with silicone rubber gasket
- 5) Special remark:
 - Anodised aluminum body can be clear anodised, gold anodised, brown anodised, titanium anodised, black anodised, brush finishing etc.
 - Built in LED driver
- 6) Suitable places: Outdoor ceiling, indoor ceiling etc.



LY8007D



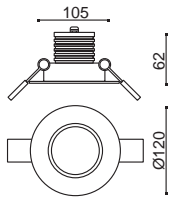
LY8007F



LY8008D



LY8008F



LY8009D



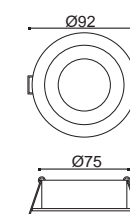
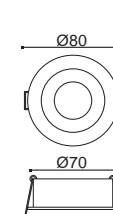
LY8009F

Model	Voltage	Lampholder	Lamp	Watt
LY8007	240V/120V/12V	LED	High power LEDS	3x1W
LY8008	240V/120V/12V	LED	High power LEDS	3x1W
LY8009	240V/120V/12V	LED	High power LEDS	6x1W



SPECIFICATION

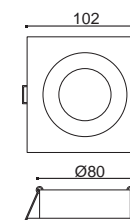
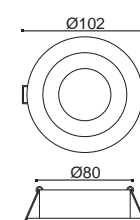
- 1) Stainless steel body
- 2) IP20 protection class
- 3) Special remark:
 - Stainless steel grade includes 316 marine grade and 304 grade
 - Stainless steel body is electrophoresis finishing
- 4) Suitable places: Outdoor ceiling, indoor ceiling etc.



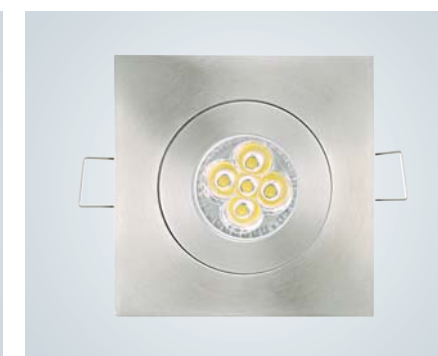
LY8001



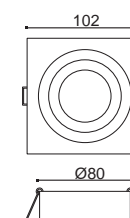
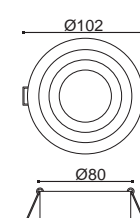
LY8002



LY8003A



LY8004A



LY8003B



LY8004B



Halogen

5x1W

5x2W

Model	Voltage	Lampholder	Lamp	Watt
LY8001	240V/120V	GU10	GU10 halogen lamp	Max.35W
LY8002			GU10 energy-saving lamp	Max.13W
LY8003			GU10 high power LED lamp	Max.10W
LY8004	12V	GX5.3	MR16 halogen lamp	Max.20W
			MR16 high power LED lamp	Max.10W

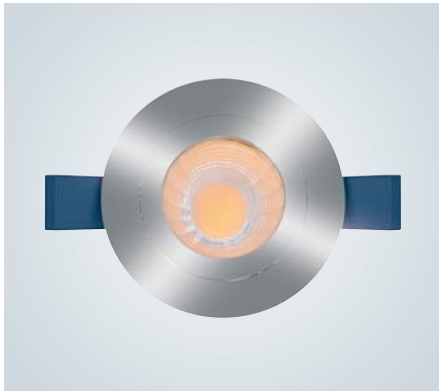
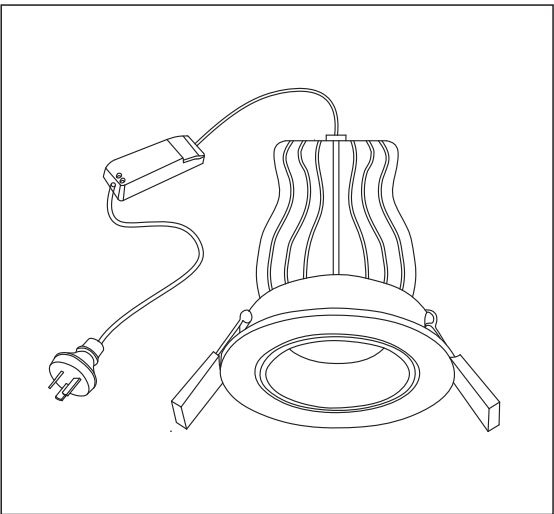


SPECIFICATION

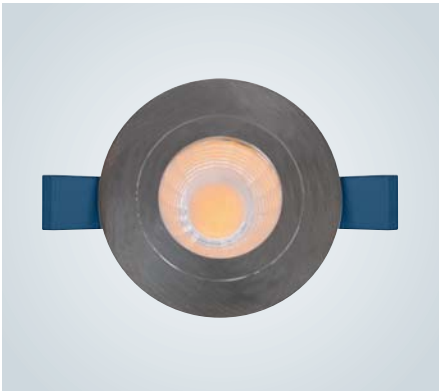
- 1) Anodised aluminum body
- 2) PC diffuser
- 3) IP20 protection class
- 4) Special remark:
 - Anodised aluminum body can be clear anodised, gold anodised, brown anodised, titanium anodised, black anodised, brush finishing etc.
 - External LED driver required
- 5) Suitable places: Outdoor ceiling, indoor ceiling etc.



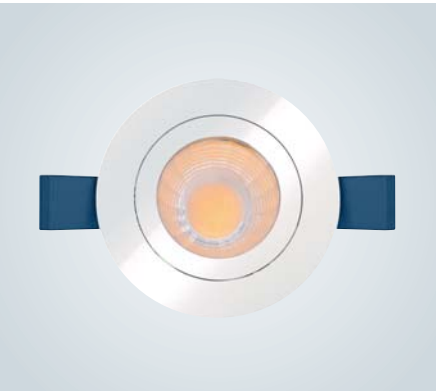
Model	Voltage	Lampholder	Lamp	Watt
LY8006	240V/120V/12V	LED	COB high power LEDs	15W



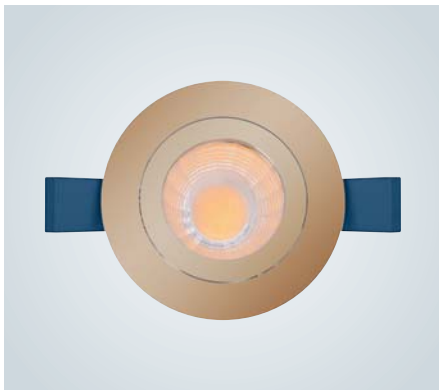
LY8006A



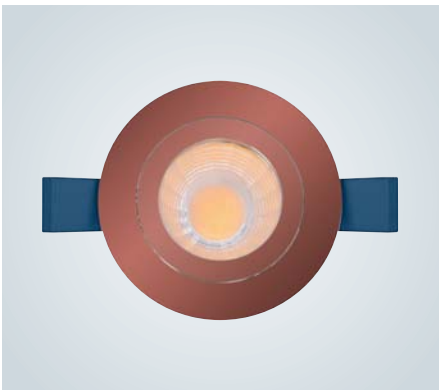
LY8006B



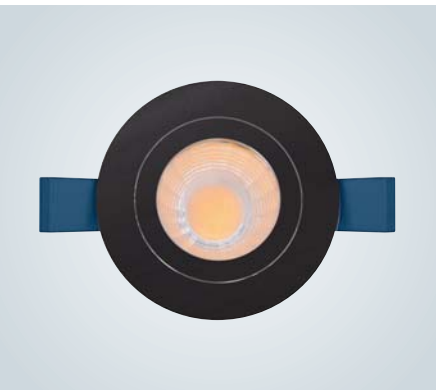
LY8006C



LY8006D



LY8006E



LY8006F



ACCESSORIES



ACCESSORIES



GU10 35W



GU10 3x1W



GU10 5x1W



GU10 5x2W



MR16 20W



MR16 3x1W



MR16 5x1W



MR16 5x2W



MR11 20W



MR11 1W



E27 3x3W



E27 15W



PAR36 100W



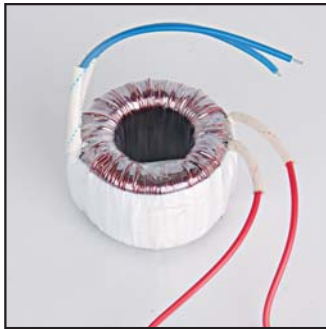
PAR56 300W



Deck light transformer



Electronic transformer



Integral transformer



Waterproof transformer



Deck light connection box



Cable connection box



Downlight connection box



Waterproof connection box



Aluminum spike



Stainless steel spike



Plastic spike



Cable gland



Stainless steel installing housing



Plastic installing housing



Plastic installing housing

